



# METALSYSTEM

EXCELÊNCIA EM PRODUTOS

**itp**<sup>TM</sup>  
styli

M4

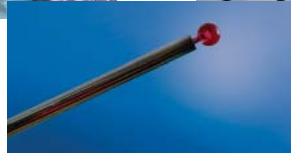
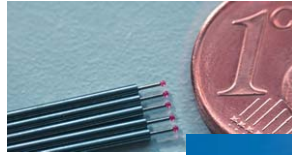
---



Rua João Pereira Chaves, 140  
Jardim América - São Leopoldo - RS - Brasil  
CEP: 93032-320

Fone/Fax: +55.51.3037.4868  
vendas@metalsystem.ind.br  
[www.metalsystem.ind.br](http://www.metalsystem.ind.br)





### Adapter Plates and Adapter Plate Extensions

Adapter plates equivalent to Zeiss Vast and MT with active ID chip and individual plate code. Every plate is tested before shipping. Unbeatable price and ships same day.

Adapter plate extensions with or without cube offer integral components to maximize rigidity.



### Temp-Comp: Constant Length at Varying Temperatures

Temp-Comp thermal stable carbon fiber provides relatively low weight and the greatest temperature stability. When coupled with our unique titanium end cap design, thermal expansion is essentially zero on a 180 mm long extension.



### Custom Probe Tooling Solutions

Ask us about custom probe tooling solutions from design to delivery. Titanium holders with your unique angles are coupled with Temp-Comp thermal stable carbon fiber in rigid configurations designed to improve cycle time and measurement accuracy.

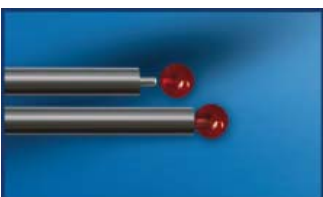
### itp Specials: Custom Styli Manufactured to Your Specifications



Whether it is a simple change in length or a more elaborate customization, itpstylis welcomes the opportunity to provide the solution you need.

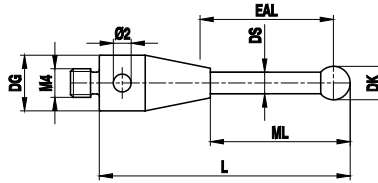


### Best Quality



Peg mounted ruby spheres drilled in-house increase durability and accuracy on spheres up to 10mm in diameter. (Below 0.5mm, drilling is not possible)

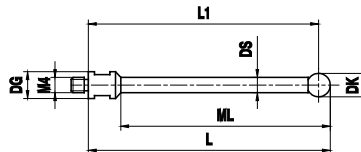
**M4  
Ruby  
Carbide**



**Ball Range  
1.0-6.0 mm** TN: 278 – O: 8000

DK	L	ML1 ML	DS1 DS	Weight g	Base/Stem Material	Part Number
1.0	20.5	10.5	0.7	2.4	Stainless steel / Carbide	TH M4 010 R7 020
2.0	21.0	11.0	1.5	3.0	Stainless steel / Carbide	TH M4 020 07 021
2.0	51.0	41.0	1.5	3.8	Stainless steel / Carbide	TH M4 020 07 051
3.0	21.5	11.5	1.5	3.5	Stainless steel / Carbide	TH M4 030 07 021
3.0	51.5	40.0	2.0	4.9	Stainless steel / Carbide	TH M4 030 07 051
4.0	22.0	10.5	1.5	3.5	Stainless steel / Carbide	TH M4 040 07 022
4.0	52.0	40.5	2.0	5.0	Stainless steel / Carbide	TH M4 040 07 052
5.0	22.5	9.0	2.5	4.5	Stainless steel / Carbide	TH M4 050 07 022
5.0	52.5	39.0	2.5	6.7	Stainless steel / Carbide	TH M4 050 07 052
6.0	23.0	9.5	2.5	4.7	Stainless steel / Carbide	TH M4 060 07 023
6.0	53.0	39.5	2.5	6.9	Stainless steel / Carbide	TH M4 060 07 053

**M4  
Ruby  
Carbide**

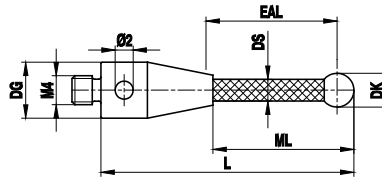


**Ball Range  
1.0-8.0 mm** TN: 216 – O: 8100

Marposs Style

DK	L L1	DG D	ML1 ML	DS1 DS	Weight g	Base/Stem Material	Part Number
1.0	20.5 / 20.0	7.0	4.5	0.8	1.5	Stainless steel / Carbide	TH M4 010 07 020
2.0	21.0 / 20.0	7.0	8.0	1.5	1.5	Stainless steel / Carbide	TH M4 020 07 020
4.0	22.0 / 20.0	7.0	12.0	3.0	1.9	Stainless steel / Carbide	TH M4 040 07 020
6.0	23.0 / 20.0	7.0	14.5	4.0	2.1	Stainless steel / Carbide	TH M4 060 07 020
6.0	38.0 / 35.0	7.0	29.5	4.0	15.2	Stainless steel / Carbide	TH M4 060 07 035
6.0	43.0 / 40.0	7.0	34.5	4.0	16.5	Stainless steel / Carbide	TH M4 060 07 040
6.0	53.0 / 50.0	7.0	44.5	4.0	18.0	Stainless steel / Carbide	TH M4 060 07 050
6.0	78.0 / 75.0	7.0	69.5	4.0	19.7	Stainless steel / Carbide	TH M4 060 07 075
6.0	103.0 / 100.0	7.0	94.5	4.0	27.5	Stainless steel / Carbide	TH M4 060 07 100
7.0	153.5 / 150.0	7.0	135.5	4.0	36.0	Stainless steel / Carbide	TH M4 070 07 150
8.0	24.0 / 20.0	7.0	15.5	4.0	2.2	Stainless steel / Carbide	TH M4 080 07 020

**M4  
Ruby  
Carbon Fiber**

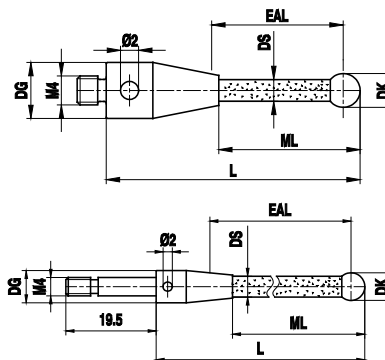


**Ball Range  
6.0 mm**

TN: 143 - O: 8200

DK	L	ML1 ML	EAL B	DS1 DS	Weight g	Base/Stem Material	Part Number
6.0	53.0	36.5	36.0	4.5	5.1	Stainless steel / Carbon fiber	TC M4 060 07 053
6.0	103.0	86.5	86.0	4.5	6.2	Stainless steel / Carbon fiber	TC M4 060 07 103
6.0	153.0	136.5	138.5	4.5	7.5	Stainless steel / Carbon fiber	TC M4 060 07 153
6.0	203.0	186.5	186.0	4.5	8.7	Stainless steel / Carbon fiber	TC M4 060 07 203
6.0	303.0	286.5	288.5	4.5	10.4	Stainless steel / Carbon fiber	TC M4 060 07 303

**M4  
Ruby  
Ceramic**

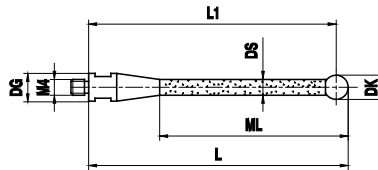


**Ball Range  
5.0-8.0 mm**

TN: 142 - O: 8300

DK	L	ML1 ML	EAL B	DS1 DS	Weight g	Base/Stem Material	Part Number
5.0	52.5	36.0	34.0	3.5	5.0	Stainless steel / Ceramic	TK M4 050 07 052
5.0	77.5	61.0	59.0	3.5	5.6	Stainless steel / Ceramic	TK M4 050 07 077
5.0	102.5	86.0	84.0	3.5	6.4	Stainless steel / Ceramic	TK M4 050 07 102
6.0	78.0	61.5	63.5	4.5	5.6	Stainless steel / Ceramic	TK M4 060 07 078
6.0	53.0	36.5	36.0	4.5	4.7	Stainless steel / Ceramic	TK M4 060 07 053
6.0	103.0	86.5	86.0	4.5	6.7	Stainless steel / Ceramic	TK M4 060 07 103
6.0	53.0	36.5	36.0	4.5	6.0	Stainless steel / Ceramic	TK M4 060 S7 053*
6.0	103.0	86.0	86.0	4.5	7.5	Stainless steel / Ceramic	TK M4 060 S7 103*
8.0	54.0	37.5	50.0	4.5	5.1	Stainless steel / Ceramic	TK M4 080 07 054
8.0	104.0	87.5	100.0	4.5	6.6	Stainless steel / Ceramic	TK M4 080 07 104
8.0	79.0	62.5	75.0	4.5	6.2	Stainless steel / Ceramic	TK M4 080 07 079

**M4  
Ruby  
Ceramic**



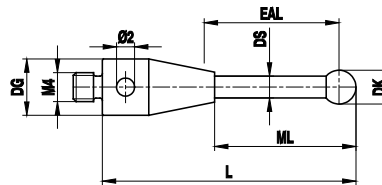
**Ball Range  
6.0-10.0 mm**

TN: 215 - O: 8400

**Marposs Style**

DK	L L1	DG D	ML1 ML	DS1 DS	Weight g	Base/Stem Material	Part Number
6.0	38.0 / 35.0	7.0	29.5	4.0	3.8	Stainless steel / Ceramic	TK M4 060 07 035
6.0	43.0 / 40.0	7.0	34.5	4.0	4.0	Stainless steel / Ceramic	TK M4 060 07 040
6.0	48.0 / 45.0	7.0	39.5	4.0	4.7	Stainless steel / Ceramic	TK M4 060 07 045
6.0	53.0 / 50.0	7.0	44.5	4.0	4.5	Stainless steel / Ceramic	TK M4 060 07 050
6.0	78.0 / 75.0	7.0	60.0	4.0	5.2	Stainless steel / Ceramic	TK M4 060 07 075
6.0	103.0 / 100.0	7.0	85.0	4.0	6.5	Stainless steel / Ceramic	TK M4 060 07 100
7.0	128.5 / 125.0	7.0	110.5	4.0	7.9	Stainless steel / Ceramic	TK M4 070 07 125
7.0	153.5 / 150.0	7.0	135.5	4.0	8.9	Stainless steel / Ceramic	TK M4 070 07 150
7.0	73.5 / 70.0	7.0	55.5	4.0	5.0	Stainless steel / Ceramic	TK M4 070 07 070
10.0	105.0 / 100.0	7.0	87.0	4.0	7.3	Stainless steel / Ceramic	TK M4 100 07 100

**M4  
Ruby  
Stainless Steel**

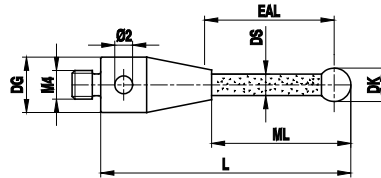


**Ball Range  
1.0-8.0 mm**

TN: 141 - O: 8600

DK	L	ML1 ML	EAL B	DS1 DS	Weight g	Base/Stem Material	Part Number
1.0	20.0	4.5	4.0	0.7	2.5	Stainless steel	TI M4 010 07 020
2.0	20.0	9.0	8.0	1.3	2.3	Stainless steel	TI M4 020 07 020
3.0	20.0	14.5	13.0	2.0 - 3.0	2.0	Stainless steel	TI M4 030 07 020
4.0	20.0	15.0	13.0	3.0	2.1	Stainless steel	TI M4 040 07 020
5.0	20.0	16.0	13.5	3.5	2.3	Stainless steel	TI M4 050 07 020
5.0	22.5	17.5	16.0	3.0	2.4	Stainless steel	TI M4 050 07 022
5.0	52.5	35.5	33.0	4.5	5.8	Stainless steel	TI M4 050 07 052
5.0	102.5	85.5	83.0	4.5	11.3	Stainless steel	TI M4 050 07 102
5.0	13.0	9.0	5.5	3.5	2.0	Stainless steel	TI M4 050 07 013
5.0	152.5	135.5	133.0	4.5	18.2	Stainless steel	TI M4 050 07 152
5.0	32.5	27.5	26.0	3.0	3.0	Stainless steel	TI M4 050 07 032
6.0	20.0	16.0	13.5	4.5	3.0	Stainless steel	TI M4 060 07 020
8.0	20.0	16.5	16.0	6.0	3.9	Stainless steel	TI M4 080 07 020

**M4  
Silicon Nitride  
Ceramic**

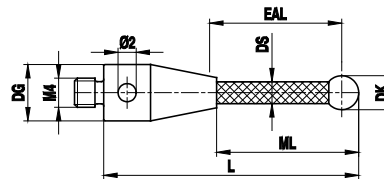


**Ball Range  
6.0-8.0 mm**

TN: 205 – O: 8800

DK	L	ML1 ML	EAL B	DS1 DS	Weight g	Base/Stem Material	Part Number
6.0	53.0	36.5	36.0	4.5	4.7	Stainless steel / Ceramic	TK M4 S60 07 053
6.0	103.0	86.5	86.0	4.5	6.7	Stainless steel / Ceramic	TK M4 S60 07 103
8.0	54.0	37.5	50.0	4.5	5.1	Stainless steel / Ceramic	TK M4 S80 07 054
8.0	104.0	87.5	100.0	4.5	6.6	Stainless steel / Ceramic	TK M4 S80 07 104

**M4  
Silicon Nitride  
Carbon Fiber**

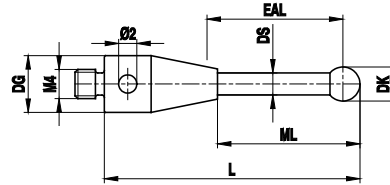


**Ball Range  
6.0 mm**

TN: 207 – O: 8850

DK	L	ML1 ML	EAL B	DS1 DS	Weight g	Base/Stem Material	Part Number
6.0	53.0	36.5	36.0	4.5	5.1	Stainless steel / Carbon fiber	TC M4 S60 07 053
6.0	103.0	86.5	86.0	4.5	6.2	Stainless steel / Carbon fiber	TC M4 S60 07 103
6.0	153.0	136.5	138.5	4.5	7.5	Stainless steel / Carbon fiber	TC M4 S60 07 153
6.0	203.0	186.5	186.0	4.5	8.7	Stainless steel / Carbon fiber	TC M4 S60 07 203
6.0	303.0	286.5	288.5	4.5	10.4	Stainless steel / Carbon fiber	TC M4 S60 07 303

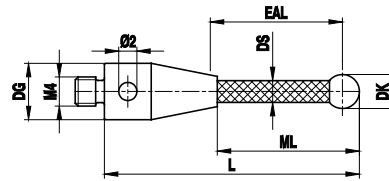
**M4  
Silicon Nitride  
Stainless Steel**



**Ball Range  
1.0-8.0 mm** TN: 206 – O: 8900

DK	L	ML1 ML	EAL B	DS1 DS	Weight g	Base/Stem Material	Part Number
1.0	20.0	4.5	4.0	0.7	2.5	Stainless steel	TI M4 S10 07 020
2.0	20.0	9.0	8.0	1.3	2.3	Stainless steel	TI M4 S20 07 020
3.0	20.0	14.5	13.0	2.0 – 3.0	2.0	Stainless steel	TI M4 S30 07 020
4.0	20.0	15.0	13.0	3.0	2.1	Stainless steel	TI M4 S40 07 020
5.0	20.0	16.0	13.5	3.5	2.3	Stainless steel	TI M4 S50 07 020
5.0	22.5	17.5	16.0	3.0	2.4	Stainless steel	TI M4 S50 07 022
5.0	52.5	35.5	33.0	4.5	5.8	Stainless steel	TI M4 S50 07 052
5.0	102.5	85.5	83.0	4.5	11.3	Stainless steel	TI M4 S50 07 102
6.0	20.0	16.0	13.5	4.5	3.0	Stainless steel	TI M4 S60 07 020
8.0	20.0	16.5	16.0	6.0	3.9	Stainless steel	TI M4 S80 07 020

**M4  
Zirconium Oxide  
Carbon Fiber**

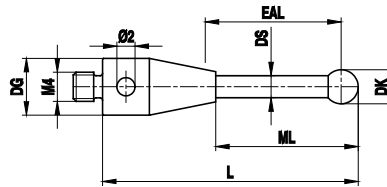


**Ball Range  
6.0 mm** TN: 285 – O: 9100

DK	L	ML1 ML	EAL B	DS1 DS	Weight g	Base/Stem Material	Part Number
6.0	53.0	36.5	36.0	4.5	5.1	Stainless steel / Carbon fiber	TC M4 Z60 07 053
6.0	103.0	86.5	86.0	4.5	6.2	Stainless steel / Carbon fiber	TC M4 Z60 07 103
6.0	153.0	136.5	138.5	4.5	7.5	Stainless steel / Carbon fiber	TC M4 Z60 07 153
6.0	203.0	186.5	186.0	4.5	8.7	Stainless steel / Carbon fiber	TC M4 Z60 07 203
6.0	303.0	286.5	288.5	4.5	10.4	Stainless steel / Carbon fiber	TC M4 Z60 07 303



**M4  
Zirconium Oxide  
Stainless Steel**

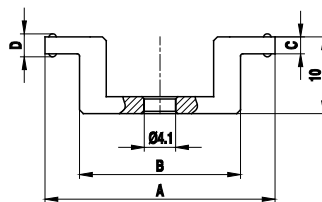


**Ball Range  
2.0-4.0 mm**

TN: 286 - O: 9150

DK	L	ML1 ML	EAL B	DS1 DS	Weight g	Base/Stem Material	Part Number
2.0	20.0	9.0	8.0	1.3	2.3	Stainless steel	TI M4 Z20 07 020
4.0	20.0	15.0	13.0	3.0	2.1	Stainless steel	TI M4 Z40 07 020

**M4  
Disks  
Stainless Steel**

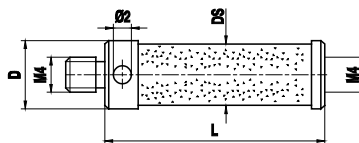


**Disk Range  
30.0-50.0 mm**

TN: 301 - O: 9200

C D	A B	Weight g	Material	Part Number
2.2 / 3.0	21.0 / 30.0	8.0	Stainless steel	KI M4 022 30 021
2.2 / 3.0	21.0 / 35.0	9.5	Stainless steel	KI M4 022 35 021
3.0 / 4.0	23.0 / 50.0	13.5	Stainless steel	KI M4 030 50 023

**M4  
Extensions  
Ceramic**

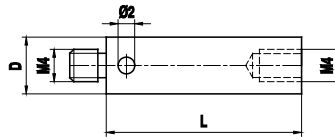


**Length Range  
30.00-100.00 mm**

TN: 144 - O: 9300

L	DG D	Weight g	Body Material	End Material	Part Number
30.0	7.5	5.1	Ceramic	Stainless Steel	VK M4 000 07 030
50.0	7.5	6.7	Ceramic	Stainless Steel	VK M4 000 07 050
100.0	7.5	10.6	Ceramic	Stainless Steel	VK M4 000 07 100

**M4  
Extensions  
Stainless Steel**

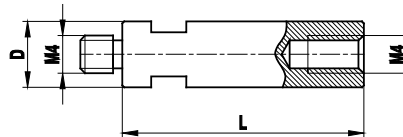


**Length Range**  
10.00-30.00 mm

TN: 151 – O: 9400

L	DG D	Weight g	Body Material	Part Number
10.0	7.0	2.4	Stainless steel	VI M4 000 07 010
15.0	7.0	3.7	Stainless steel	VI M4 000 07 015
20.0	7.0	4.8	Stainless steel	VI M4 000 07 020
30.0	7.0	7.4	Stainless steel	VI M4 000 07 030

**M4  
Extensions  
Stainless Steel**



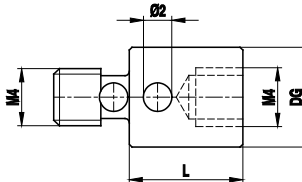
**Length Range**  
10.00-50.00 mm

TN: 213 – O: 9500

Marposse Style

L	DG D	Weight g	Body Material	Part Number
10.0	7.0	2.4	Stainless steel	VI M4 000 M7 010
15.0	7.0	3.7	Stainless steel	VI M4 000 M7 015
20.0	7.0	4.8	Stainless steel	VI M4 000 M7 020
30.0	7.0	7.4	Stainless steel	VI M4 000 M7 030
50.0	7.0	9.5	Stainless steel	VI M4 000 M7 050

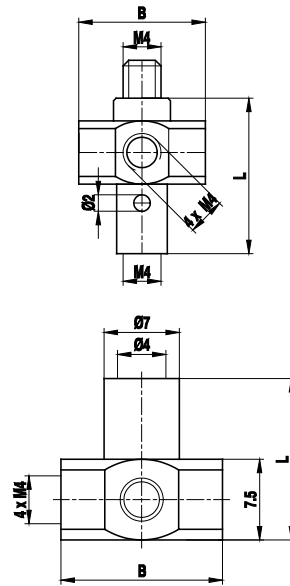
**M4  
Holders  
Stainless Steel**



**Holder for Anticrash  
Protection**

TN: 179 – O: 9700

DG D	L	Weight g	Body Material	Part Number
7.0	8.0	1.8	Stainless steel	BI M4 000 07 008
7.0	6.0	1.4	Stainless steel	BI M4 000 07 006
7.0	10.0	1.5	Stainless steel	BI M4 000 07 010
7.0	12.0	2.7	Stainless steel	BI M4 000 07 012
7.0	15.2	4.6	Stainless steel	BI M4 000 07 015
7.0	9.0	1.5	Stainless steel	BI M4 000 07 009
7.0	16.0	2.1	Stainless steel	BI M4 000 R7 016

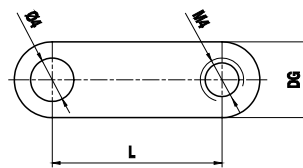


**M4  
5-Way Rotary  
Holders  
Stainless Steel**

**5-Way Star Center** TN: 178 – O: 9800

L	EAL B	Weight g	Body Material	Part Number
18.0	15.0	12.5	Stainless steel	HI M4 000 15 018
15.0	15.0	10.0	Stainless steel	HI M4 000 15 015*

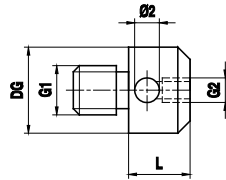
**M4  
Adapters for  
Crank Styli  
Stainless Steel**



**Holder for Crank** TN: 257 – O: 9900

DG D	L	Weight g	Body Material	Part Number
7.0	22.0	1.5	Stainless steel	RI M4 000 07 022
7.0	28.0	1.8	Stainless steel	RI M4 000 07 028

## M4 Adapters Stainless Steel

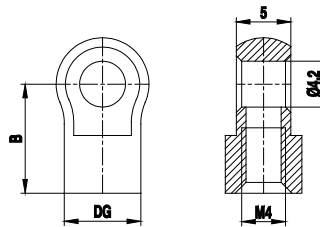


### Adapter

TN: 145 – O: 10000

G1 G2	L	DG D	Weight g	Material	Part Number
M4/M2	5.0	7.0	1.5	Stainless steel	RI M4 000 07 005
M4/M3	9.0	7.0	1.4	Stainless steel	RI M4 000 07 009
M4/M5	10.0	11.0	5.2	Stainless steel	RT M4 500 11 010
M4x0.5/M3	18.0	7.0	1.9	Stainless steel	RI M4 300 07 018

## M4 Adapters Stainless Steel

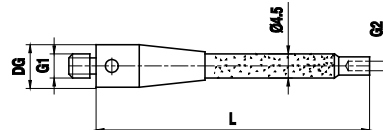


### Swivel Adapter

TN: 300 – O: 10100

DG D	L	EAL B	Weight g	Material	Part Number
7.0	14.25	10.0	2.8	Stainless steel	RI M4 000 07 014
7.0	17.75	13.5	3.7	Stainless steel	RI M4 000 07 018

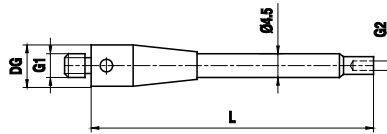
## M4 Adapters Ceramic



### Extension Adapter M4 – M3

TN: 311 – O: 10200

L	DG D	Weight g	Base/Body Material	Part Number
50.0	7.0	4.4	Stainless steel / Ceramic	RK M4 300 07 050
75.0	7.0	5.2	Stainless steel / Ceramic	RK M4 300 07 075
100.0	7.0	6.3	Stainless steel / Ceramic	RK M4 300 07 100

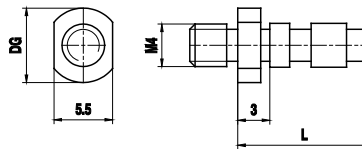


**M4  
Adapters  
Stainless Steel**

**Extension Adapter** TN: 258 – O: 10300

L	DG D	G1 G2	Weight g	Base/Body Material	Part Number
20.0	7.0	M4/M3	3.2	Stainless steel	RI M4 300 07 020

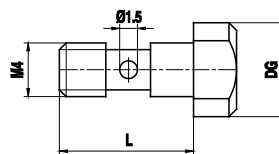
**M4  
Adapters  
Stainless Steel**



**Anticrash Adapter  
for WP Styli** TN: 233 – O: 10400

L	DG D	Weight g	Body Material	Part Number
16.0	7.0	1.8	Stainless steel	BI M4 000 07 016

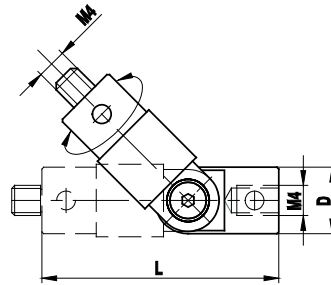
**M4  
Screw for Adapter  
Stainless Steel**



**Screw for Crank** TN: 256 – O: 10500

L	DG D	Weight g	Body Material	Part Number
10.0	7.0	1.8	Stainless steel	SI M4 000 07 010

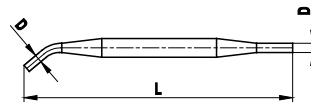
**M4  
Rotary Knuckles  
Stainless Steel**



**Rotary Knuckle** TN: 294 – O: 10600

DG D	L	Weight g	Material	Part Number
9.0	33.0	9.8	Stainless steel	GI M4 000 09 033

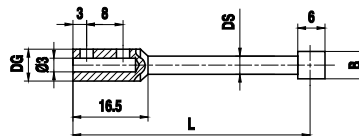
**M4  
Pin-Type Wrench  
Stainless Steel**



**Pin-Type Wrench** TN: 312 – O: 10610

DG D	L	Body Material	Part Number
1.7	49.0	Stainless steel	MI MO 017 00 049

**M4  
Styli for Tool  
Datuming  
Stainless Steel-  
Carbide Cube**



**Cube Range** TN: 255 – O: 10700  
**31.00-95.00 mm**

L	EAL B	DG D	DS1 DS	Weight g	Base/Cube Material	Part Number
31.0	6.0	7.0	4.0	3.3	Stainless steel / Carbide	WP M4 000 07 031
36.0	6.0	7.0	4.0	3.5	Stainless steel / Carbide	WP M4 000 07 036
48.0	6.0	7.0	4.0	3.8	Stainless steel / Carbide	WP M4 000 07 048
61.0	6.0	7.0	4.0	4.7	Stainless steel / Carbide	WP M4 000 07 061
95.0	6.0	7.0	4.0	7.5	Stainless steel / Carbide	WP M4 000 07 095