



METALSYSTEM

EXCELÊNCIA EM PRODUTOS

**itp**TM
styli

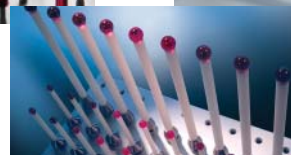
M3



Rua João Pedro Chaves, 140
Jardim América - São Leopoldo - RS - Brasil
CEP: 93032-320

Fone/Fax: +55.51.3037.4868
vendas@metalsystem.ind.br
www.metalsystem.ind.br





Adapter Plates and Adapter Plate Extensions

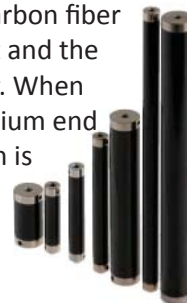
Adapter plates equivalent to Zeiss Vast and MT with active ID chip and individual plate code. Every plate is tested before shipping. Unbeatable price and ships same day.

Adapter plate extensions with or without cube offer integral components to maximize rigidity.



Temp-Comp: Constant Length at Varying Temperatures

Temp-Comp thermal stable carbon fiber provides relatively low weight and the greatest temperature stability. When coupled with our unique titanium end cap design, thermal expansion is essentially zero on a 180 mm long extension.



Custom Probe Tooling Solutions

Ask us about custom probe tooling solutions from design to delivery. Titanium holders with your unique angles are coupled with Temp-Comp thermal stable carbon fiber in rigid configurations designed to improve cycle time and measurement accuracy.

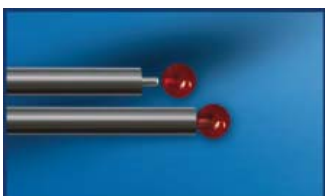
itp Specials: Custom Styli Manufactured to Your Specifications



Whether it is a simple change in length or a more elaborate customization, itpstyli welcomes the opportunity to provide the solution you need.

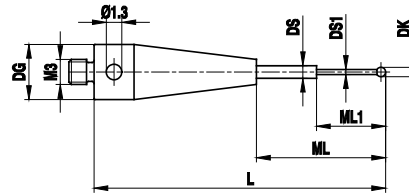


Best Quality



Peg mounted ruby spheres drilled in-house increase durability and accuracy on spheres up to 10mm in diameter. (Below 0.5mm, drilling is not possible)

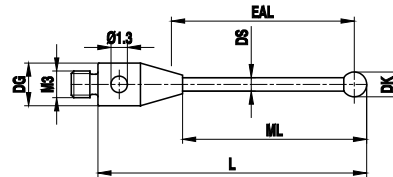
**M3
Mini Ruby
Carbide**



**Ball Range
0.2-1.0 mm** TN: 71 -- O: 4500

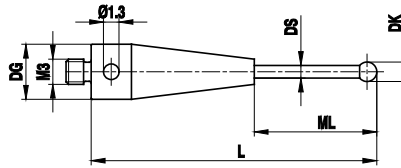
DK	L	ML1 ML	DS1 DS	Weight g	Base/Stem Material	Part Number
0.2	22.0	2.3/9.0	0.18/1.0	1.0	Stainless steel / Carbide	TH M3 002 04 022
0.25	22.0	2.3/9.0	0.18/1.0	1.0	Stainless steel / Carbide	TH M3 0025 04 022
0.3	22.0	2.3/9.0	0.2/1.0	1.0	Stainless steel / Carbide	TH M3 003 04 022
0.5	22.0	2.5/9.0	0.3/1.0	1.0	Stainless steel / Carbide	TH M3 005 04 022
0.6	22.0	4.6/9.0	0.4/1.0	1.0	Stainless steel / Carbide	TH M3 006 04 022
0.8	22.0	4.8/9.0	0.6/1.0	1.0	Stainless steel / Carbide	TH M3 008 04 022
1.0	10.5	5.0/5.5	0.8/1.0	1.0	Stainless steel / Carbide	TH M3 010 04 010
1.0	22.0	5.0/9.0	0.8/1.0	1.0	Stainless steel / Carbide	TH M3 010 04 022

**M3
Mini Ruby
Stainless Steel**



**Ball Range
1.0-5.0 mm** TN: 130 -- O: 4600

DK	L	ML1 ML	EAL B	DS1 DS	Weight g	Base/Stem Material	Part Number
1.0	21.5	4.5	4.0	0.7	1.0	Stainless steel	TI M3 010 04 021
2.0	22.0	9.0	8.0	1.5	1.0	Stainless steel	TI M3 020 04 022
3.0	22.5	13.5	12.0	1.5	1.0	Stainless steel	TI M3 030 04 022
4.0	23.0	13.0	17.2	2.5	1.3	Stainless steel	TI M3 040 04 023
4.0	33.0	23.0	27.0	2.5	2.5	Stainless steel	TI M3 040 04 033
5.0	23.5	13.5	21.0	2.5	1.5	Stainless steel	TI M3 050 R4 023
5.0	33.5	33.5	31.0	3.5	3.0	Stainless steel	TI M3 050 R4 033



**M3
Ruby
Carbide**

**Ball Range
1.5-6.0 mm**

TN: 71 -- O: 4700

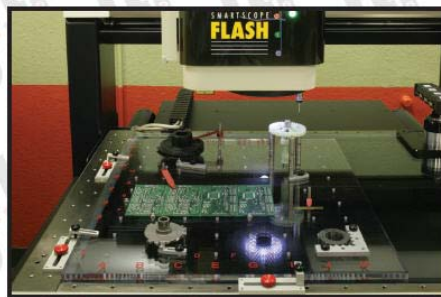
DK	L	DG D	ML1 ML	DS1 DS	Weight g	Base/Stem Material	Part Number
1.5	22.0	4.0	9.0	1.0	1.0	Stainless steel / Carbide	TH M3 015 04 022
2.0	21.0	4.0	15.0	1.0	1.0	Stainless steel / Carbide	TH M3 020 04 021
2.0	22.0	4.0	9.0	1.0	1.0	Stainless steel / Carbide	TH M3 020 04 022
2.0	40.0	4.0	34.0	1.5	2.0	Stainless steel / Carbide	TH M3 020 04 040
3.0	50.0	5.5	31.5	2.0	4.5	Stainless steel / Carbide	TH M3 030 05 050
3.0	21.0	4.0	13.0	2.0	1.0	Stainless steel / Carbide	TH M3 030 04 021
3.0	21.5	4.0	15.5	1.5	1.0	Stainless steel / Carbide	TH M3 030 04 022
3.0	40.0	5.5	21.5	2.0	4.0	Stainless steel / Carbide	TH M3 Z30 05 040
3.0	40.0	5.5	21.5	2.0	4.0	Stainless steel / Carbide	TH M3 K30 05 040
4.0	30.0	4.0	22.0	2.0	2.0	Stainless steel / Carbide	TH M3 040 04 030
4.0	40.0	4.0	32.0	2.0	2.0	Stainless steel / Carbide	TH M3 040 04 040
4.0	50.0	4.0	42.0	2.0	2.9	Stainless steel / Carbide	TH M3 040 04 050
5.0	30.0	4.0	22.0	2.0	2.1	Stainless steel / Carbide	TH M3 050 04 030
5.0	40.0	4.0	32.0	2.0	2.0	Stainless steel / Carbide	TH M3 050 04 040
5.0	50.0	4.0	42.0	2.0	3.0	Stainless steel / Carbide	TH M3 050 04 050
5.0	60.0	4.0	52.0	2.0	3.5	Stainless steel / Carbide	TH M3 050 04 060
6.0	30.0	4.0	22.0	2.0	2.3	Stainless steel / Carbide	TH M3 060 04 030
6.0	40.0	4.0	32.0	2.0	2.7	Stainless steel / Carbide	TH M3 060 04 040
6.0	50.0	4.0	42.0	2.0	3.2	Stainless steel / Carbide	TH M3 060 04 050

Got Vision?

itpstyli manufactures a comprehensive line of vision fixturing system parts sold either by the piece or in kits. The components are very high quality while the prices are the lowest available.



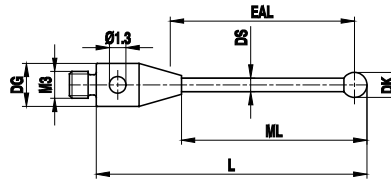
Vision Systems Fixturing
NOW with abrasion resistant acrylic



Kits Starting at \$860



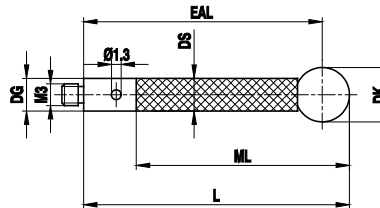
**M3
Ruby
Carbide**



**Ball Range
0.5-5.0 mm** TN: 131 -- O: 4800

DK	L	DG D	ML1 ML	DS1 DS	Weight g	Base/Stem Material	Part Number
0.5	21.25	4.0	2.5	0.4	1.0	Stainless steel / Carbide	TH M3 005 04 021
1.5	21.75	4.0	14.25	1.0	0.8	Stainless steel / Carbide	TH M3 015 R4 022
1.5	30.75	4.0	23.25	1.0	1.0	Stainless steel / Carbide	TH M3 015 04 031
2.0	31.0	4.0	23.5	1.5	1.3	Stainless steel / Carbide	TH M3 020 04 031
2.0	41.0	4.0	33.5	1.5	1.6	Stainless steel / Carbide	TH M3 020 04 041
2.5	41.25	4.0	33.75	2.0	2.3	Stainless steel / Carbide	TH M3 025 04 041
2.5	22.25	4.0	14.75	2.0	1.3	Stainless steel / Carbide	TH M3 025 04 022
2.5	31.25	4.0	23.75	2.0	1.8	Stainless steel / Carbide	TH M3 025 04 031
3.0	31.5	4.0	24.0	2.0	1.9	Stainless steel / Carbide	TH M3 030 04 031
3.0	41.5	4.0	34.0	2.0	2.3	Stainless steel / Carbide	TH M3 030 04 041
3.0	51.5	4.0	44.0	2.0	2.8	Stainless steel / Carbide	TH M3 030 04 051
4.0	42.0	4.0	34.5	2.0	2.4	Stainless steel / Carbide	TH M3 040 04 042
4.0	52.0	4.0	44.5	2.0	2.9	Stainless steel / Carbide	TH M3 040 04 052
5.0	42.5	4.0	35.0	2.5	3.5	Stainless steel / Carbide	TH M3 050 04 042
5.0	52.5	4.0	45.0	2.5	4.1	Stainless steel / Carbide	TH M3 050 04 052

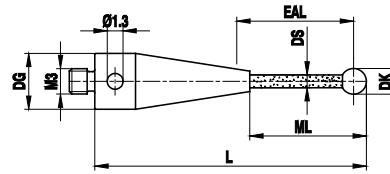
**M3
Ruby
Carbon Fiber**



**Ball Range
6.0-12.0 mm** TN: 282 -- O: 5000

DK	L	DS1 DS	Weight g	Base/Stem Material	Part Number
6.0	78.0	4.0	2.4	Stainless steel / Carbon fiber	TC M3 060 04 078
6.0	103.0	4.0	2.9	Stainless steel / Carbon fiber	TC M3 060 04 103
8.0	79.0	4.0	3.0	Stainless steel / Carbon fiber	TC M3 080 04 079
8.0	104.0	4.0	3.5	Stainless steel / Carbon fiber	TC M3 080 04 104
10.0	80.0	4.0	4.1	Stainless steel / Carbon fiber	TC M3 100 04 080
10.0	105.0	4.0	4.6	Stainless steel / Carbon fiber	TC M3 100 04 105
10.0	155.0	4.0	5.5	Stainless steel / Carbon fiber	TC M3 100 04 155
10.0	205.0	4.0	6.5	Stainless steel / Carbon fiber	TC M3 100 04 205
12.0	106.0	4.0	5.9	Stainless steel / Carbon fiber	TC M3 120 04 106
12.0	156.0	4.0	6.9	Stainless steel / Carbon fiber	TC M3 120 04 156
12.0	206.0	4.0	7.9	Stainless steel / Carbon fiber	TC M3 120 04 206

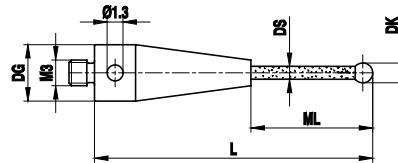
**M3
Ruby
Ceramic**



**Ball Range
3.0-5.0 mm** TN: 133 -- O: 5100

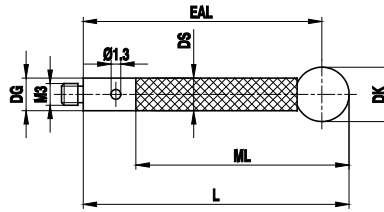
DK	L	ML1 ML	EAL B	DS1 DS	Weight g	Base/Stem Material	Part Number
3.0	51.5	44.0	42.5	2.0	1.2	Stainless steel / Ceramic	TK M3 030 04 051
4.0	52.0	44.5	46.0	2.0	1.3	Stainless steel / Ceramic	TK M3 040 04 052
5.0	52.5	45.0	50.0	2.5	1.4	Stainless steel / Ceramic	TK M3 050 04 052

**M3
Ruby
Ceramic**



**Ball Range
4.0-8.0 mm** TN: 72 -- O: 5200

DK	L	ML1 ML	DS1 DS	Weight g	Base/Stem Material	Part Number
5.0	32.0	19.0	2.0	1.0	Stainless steel / Ceramic	TK M3 050 04 032
6.0	13.0	9.0	2.0	1.0	Stainless steel / Ceramic	TK M3 060 04 013
6.0	43.5	30.5	2.0	1.2	Stainless steel / Ceramic	TK M3 060 04 043
6.0	63.5	50.5	2.0	1.5	Stainless steel / Ceramic	TK M3 060 04 063
8.0	31.5	18.5	2.0	1.3	Stainless steel / Ceramic	TK M3 080 04 031



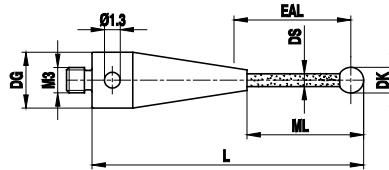
**M3
Silicon Nitride
Carbon Fiber**

**Ball Range
6.0-8.0 mm**

TN: 283 -- O: 5500

DK	L	DS1 DS	Weight g	Base/Stem Material	Part Number
6.0	78.0	4.0	2.4	Stainless steel / Carbon fiber	TC M3 S60 04 078
6.0	103.0	4.0	2.9	Stainless steel / Carbon fiber	TC M3 S60 04 103
8.0	79.0	4.0	3.0	Stainless steel / Carbon fiber	TC M3 S80 04 079
8.0	104.0	4.0	3.5	Stainless steel / Carbon fiber	TC M3 S80 04 104

**M3
Silicon Nitride
Ceramic**

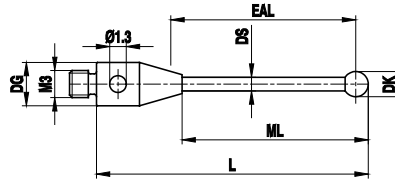


**Ball Range
3.0-5.0 mm**

TN: 203 -- O: 5700

DK	L	ML1 ML	EAL B	DS1 DS	Weight g	Base/Stem Material	Part Number
3.0	51.5	44.0	42.5	2.0	1.2	Stainless steel / Ceramic	TK M3 S30 04 051
4.0	52.0	44.5	46.0	2.0	1.3	Stainless steel / Ceramic	TK M3 S40 04 052
5.0	52.5	45.0	50.0	2.5	1.4	Stainless steel / Ceramic	TK M3 S50 04 052

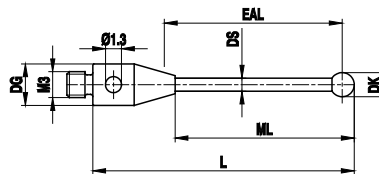
**M3
Silicon Nitride
Stainless Steel**



**Ball Range
1.0-5.0 mm** TN: 204 -- O: 5800

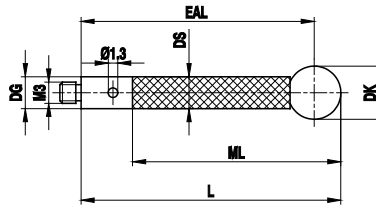
DK	L	ML1 ML	EAL B	DS1 DS	Weight g	Base/Stem Material	Part Number
1.0	21.5	4.5	4.0	0.7	1.0	Stainless steel	TI M3 S10 04 021
2.0	22.0	9.0	8.0	1.5	1.0	Stainless steel	TI M3 S20 04 022
3.0	22.5	13.5	12.0	1.5	1.0	Stainless steel	TI M3 S30 04 022
4.0	23.0	13.0	17.2	2.5	1.3	Stainless steel	TI M3 S40 04 023
4.0	33.0	23.0	27.0	2.5	2.5	Stainless steel	TI M3 S40 04 033
5.0	23.5	13.5	21.0	2.5	1.5	Stainless steel	TI M3 S50 R4 023
5.0	33.5	33.5	31.0	3.5	3.0	Stainless steel	TI M3 S50 R4 033

**M3
Zirconium Oxide
Carbide**



**Ball Range
2.0 mm** TN: 274 -- O: 5900

DK	L	DG D	ML1 ML	DS1 DS	Weight g	Base/Stem Material	Part Number
2.0	31.0	4.0	23.5	1.5	1.4	Stainless steel / Carbide	TH M3 Z20 04 031

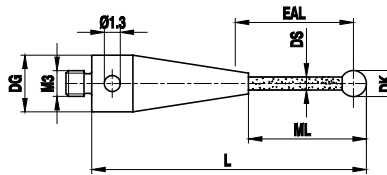


M3
Zirconium Oxide
Carbon Fiber

Ball Range
6.0-8.0 mm TN: 284 -- O: 6000

DK	L	DS1 DS	Weight g	Base/Stem Material	Part Number
6.0	78.0	4.0	3.4	Stainless steel / Carbon fiber	TC M3 Z60 04 078
6.0	103.0	4.0	3.9	Stainless steel / Carbon fiber	TC M3 Z60 04 103
8.0	79.0	4.0	3.5	Stainless steel / Carbon fiber	TC M3 Z80 04 079
8.0	104.0	4.0	4.0	Stainless steel / Carbon fiber	TC M3 Z80 04 104

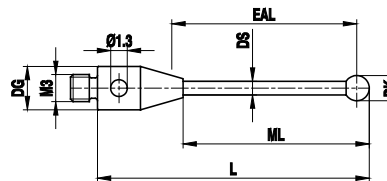
M3
Zirconium Oxide
Ceramic



Ball Range
4.0 mm TN: 275 -- O: 6100

DK	L	ML1 ML	EAL B	DS1 DS	Weight g	Base/Stem Material	Part Number
4.0	52.0	44.5	50.0	2.0	1.5	Stainless steel / Ceramic	TK M3 Z40 04 052

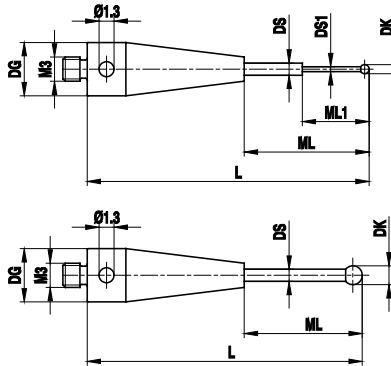
M3
Zirconium Oxide
Stainless Steel



Ball Range
2.0-4.0 mm TN: 276 -- O: 6200

DK	L	ML1 ML	EAL B	DS1 DS	Weight g	Base/Stem Material	Part Number
2.0	22.0	9.0	8.0	1.5	1.0	Stainless steel	TI M3 Z20 04 022
4.0	23.0	13.0	17.2	2.5	1.6	Stainless steel	TI M3 Z40 04 023

**M3
Carbide
Carbide**

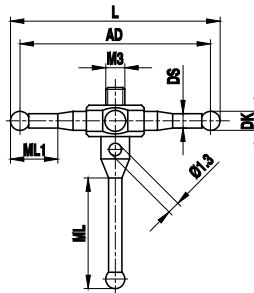


**Ball Range
1.0-8.0 mm**

TN: 413 -- O: 6250

DK	ML1 ML	DG D	L	DS1 DS	Base/Stem Material	Part Number
1.0	5.0/14.0	4.0	21.5	0.7/1.0	Stainless steel / Carbide	TH M3 010 H4 021
2.0	14.5	4.0	22.0	1.0	Stainless steel / Carbide	TH M3 020 H4 022
3.0	15.0	4.0	22.5	1.0	Stainless steel / Carbide	TH M3 030 H4 022
4.0	15.0	4.0	23.0	2.0	Stainless steel / Carbide	TH M3 040 H4 023
4.0	34.0	4.0	42.0	2.0	Stainless steel / Carbide	TH M3 040 H4 042
5.0	34.5	4.0	42.5	2.0	Stainless steel / Carbide	TH M3 050 H4 042
6.0	35.0	4.0	43.0	2.0	Stainless steel / Carbide	TH M3 060 H4 043
8.0	34.0	4.0	44.0	3.0	Stainless steel / Carbide	TH M3 080 H4 044

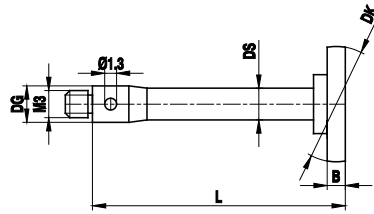
**M3
Ruby
Star & Holder
Stainless Steel**



**Ball Range
2.0 mm**

TN: 134 -- O: 6300

DK	L	AD	ML1 ML	DS1 DS	Weight g	Base & Arms	Part Number
2.0	32.0	30.0	9.5 / 12.5	1.4	3.0	Stainless steel	SI M3 020 07 032
2.0	52.0	50.0	12.0 / 12.0	1.4	5.3	Stainless steel	SI M3 020 07 052

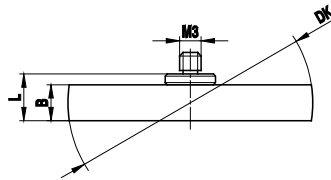


**M3
Disks
Stainless Steel**

**Disk Range
12.7 mm** TN: 181 -- O: 6400

DK	EAL B	L	DS1 DS	Weight g	Stem/Disk Material	Part Number
12.7	2.3	32.0	3.5	4.0	Stainless steel	KI M3 127 04 032

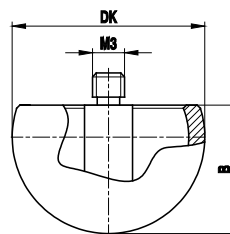
**M3
Disks
Stainless Steel**



**Disk Range
35.0-63.5 mm** TN: 180 -- O: 6500

DK	EAL B	L	Weight g	Disk Material	Part Number
35.0	5.0	7.0	10.0	Stainless steel	KI M3 050 35 M30
63.5	6.0	7.5	45.0	Stainless steel	KI M3 060 63 M30

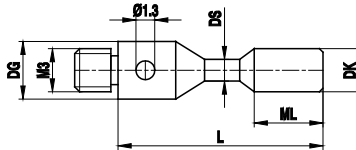
**M3
Spherical Styli
Ceramic**



**Hollow Sphere
18.0-30.0 mm** TN: 182 -- O: 6600

DK	EAL B	Weight g	Base/Body Material	Part Number
18.0	12.0	3.3	Stainless steel / Ceramic	HK M3 180 04 012
30.0	18.0	18.0	Stainless steel / Ceramic	HK M3 300 04 018

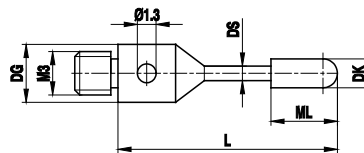
**M3
Cylinder
Carbide**



**Cylinder
1.5-3.0 mm** TN: 77 -- O: 6700

DK	L	DG D	ML1 ML	DS1 DS	Weight g	Base Material	Cylinder Material	Part Number
1.5	11.0	4.0	1.5	1.0	0.4	Stainless steel / Carbide	Carbide	ZH M3 015 04 011
3.0	13.0	4.0	4.0	1.5	0.7	Stainless steel / Carbide	Carbide	ZH M3 030 04 013

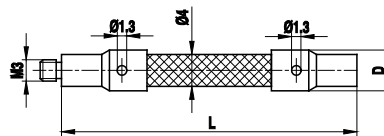
**M3
Cylinder
Ruby**



**Cylinder
2.0 mm** TN: 308 -- O: 6800

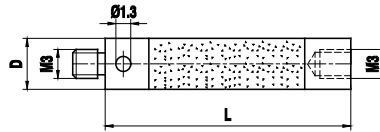
DK	L	DG D	ML1 ML	DS1 DS	Weight g	Base/Stem Material	Cylinder Material	Part Number
2.0	20.0	4.0	7.0	1.5	0.7	Stainless steel / Carbide	Ruby	ZR M3 020 04 020

**M3
Extensions
Carbon Fiber**



**Length Range
75.00-100.00 mm** TN: 277 -- O: 6900

L	DG D	Weight g	Body Material	End Material	Part Number
75.0	6.0	2.5	Carbon fiber	Stainless Steel	VC M3 000 04 075
100.0	6.0	3.0	Carbon fiber	Stainless Steel	VC M3 000 04 100



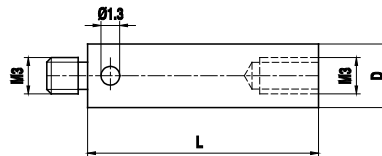
**M3
Extensions
Ceramic**

Length Range
30.00-60.00 mm

TN: 137 -- O: 7100

L	DG D	Weight g	Body Material	End Material	Part Number
30.0	4.0	2.0	Ceramic	Stainless Steel	VK M3 000 04 030
40.0	4.0	2.5	Ceramic	Stainless Steel	VK M3 000 04 040
50.0	4.0	3.0	Ceramic	Stainless Steel	VK M3 000 04 050
60.0	4.0	3.5	Ceramic	Stainless Steel	VK M3 000 04 060

**M3
Extensions
Stainless Steel**

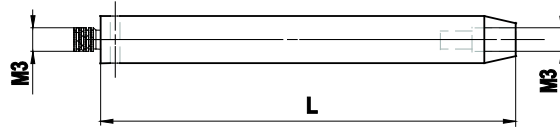


Length Range
10.00-50.00 mm

TN: 73 -- O: 7200

L	DG D	Weight g	Body Material	Part Number
10.0	4.0	0.7	Stainless steel	VI M3 000 04 010
20.0	4.0	1.6	Stainless steel	VI M3 000 04 020
30.0	4.0	2.6	Stainless steel	VI M3 000 04 030
35.0	4.0	2.9	Stainless steel	VI M3 000 04 035
40.0	4.0	3.7	Stainless steel	VI M3 000 04 040
50.0	4.0	4.7	Stainless steel	VI M3 000 04 050

**M3
Extensions
Stainless Steel**

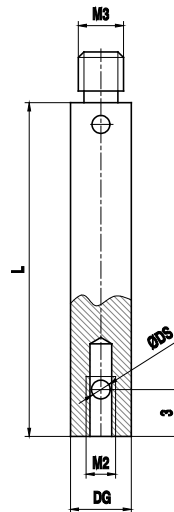


**Length Range
50.00 mm**

TN: 414 -- O: 7350

DG D	L	Body Material	Part Number
6.0	50.0	Stainless steel	VI M3 000 H6 050

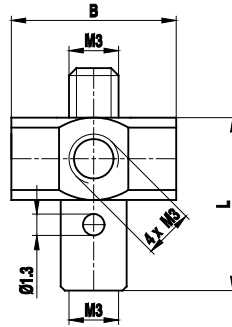
**M3
90° Holder
Stainless Steel**



1-Way 90° Holder

TN: 349 -- O: 7400

DS1 DS	L	Weight g	Material	Part Number
1.0	30.0	2.9	Stainless steel	KH M3 010 04 030
1.5	30.0	2.9	Stainless steel	KH M3 015 04 030



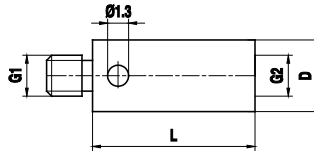
**M3
Rotary Holder
Stainless Steel**

5-Way Holder

TN: 74 -- O: 7500

EAL B	L	Weight g	Material	Part Number
10.0	13.0	3.6	Stainless steel	HI M3 000 10 013
12.0	11.5	4.2	Stainless steel	HI M3 000 12 011

**M3
Adapters
Stainless Steel**

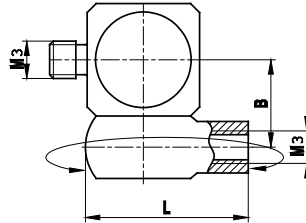


M3-M2 Adapter

TN: 88 -- O: 7700

from to	DG D	L	Weight g	Body Material	Part Number
M2 / M3	4.0	5.0	0.5	Stainless steel	RI M2 000 04 005
M2 / M3	4.0	7.0	0.5	Stainless steel	RI M2 000 04 007
M3 / M2	4.0	5.0	0.5	Stainless steel	RI M3 000 04 005

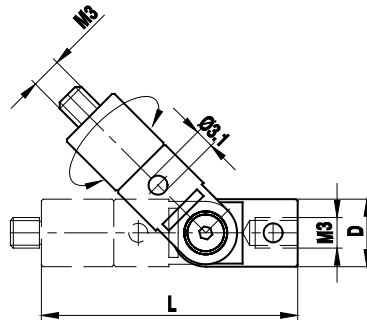
**M3
Rotary Adapter
Stainless Steel**



Rotary Adapter TN: 76 -- O: 7800

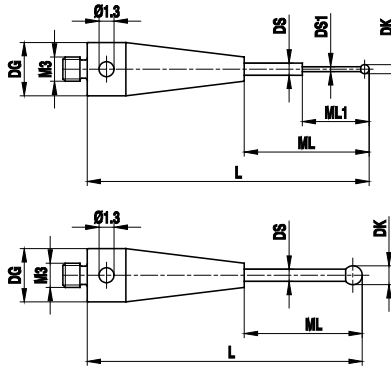
L	EAL B	Weight g	Material	Part Number
12.0	6.0	3.6	Stainless steel	DI M3 000 06 012

**M3
Rotary Knuckle
Stainless Steel**



Rotary Knuckle TN: 293 -- O: 7900

L	DG D	Weight g	Material	Part Number
17.0	4.0	1.5	Stainless steel	GI M3 000 04 017



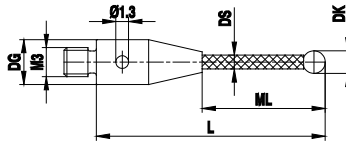
**M3
Ruby XXT
Carbide**

**Ball Range
0.3-2.5 mm**

TN: 402 -- O: 7902

DK	ML1 ML	DG D	L	DS1 DS	Weight g	Base/Stem Material	Part Number
0.3	2.3/4.0	5.0	13.0	0.2/1.0	0.62	Stainless steel / Carbide	TH M3 003 05 013
0.3	2.3/11.0	5.0	20.0	0.2/1.0	0.69	Stainless steel / Carbide	TH M3 003 05 020
0.5	2.3/4.0	5.0	13.0	0.3/1.0	0.61	Stainless steel / Carbide	TH M3 005 05 013
0.5	2.3/11.0	5.0	20.0	0.3/1.0	0.69	Stainless steel / Carbide	TH M3 005 05 020
0.6	4.6/5.0	5.0	14.0	0.4/1.0	0.61	Stainless steel / Carbide	TH M3 006 05 014
0.6	4.6/11.0	5.0	20.0	0.4/1.0	0.68	Stainless steel / Carbide	TH M3 006 05 020
0.8	5.0	5.0	14.0	0.6	0.62	Stainless steel / Carbide	TH M3 008 05 014
0.8	4.8/11.0	5.0	20.0	0.6/1.0	0.69	Stainless steel / Carbide	TH M3 008 05 020
0.8	4.1/25.0	5.0	34.0	0.6/1.0	0.80	Stainless steel / Carbide	TH M3 008 05 034
1.0	5.0	5.0	14.0	0.8	0.63	Stainless steel / Carbide	TH M3 010 05 014
1.0	5.1/11.0	5.0	20.0	0.6/1.0	0.70	Stainless steel / Carbide	TH M3 010 05 020
1.0	5.0/11.0	5.0	20.0	0.8/1.0	0.69	Stainless steel / Carbide	TH M3 010 05 020/0.8
1.0	5.0/21.0	5.0	30.0	0.8/1.0	0.80	Stainless steel / Carbide	TH M3 010 05 030
1.0	5.0/31.0	5.0	40.0	0.8/1.0	1.5	Stainless steel / Carbide	TH M3 010 05 040
1.5	5.0	5.0	14.0	1.0	0.65	Stainless steel / Carbide	TH M3 015 05 014
1.5	11.0	5.0	20.0	1.0	0.72	Stainless steel / Carbide	TH M3 015 05 020
1.5	21.0	5.0	30.0	1.0	0.84	Stainless steel / Carbide	TH M3 015 05 030/9.0
1.5	22.5	5.0	30.0	1.0	0.90	Stainless steel / Carbide	TH M3 015 05 030
1.5	31.0	5.0	40.0	1.0	1.60	Stainless steel / Carbide	TH M3 015 05 040
2.0	5.0	5.0	14.0	1.0	0.66	Stainless steel / Carbide	TH M3 020 05 014
2.0	11.0	5.0	20.0	1.0	0.72	Stainless steel / Carbide	TH M3 020 05 020
2.0	21.0	5.0	30.0	1.0	0.83	Stainless steel / Carbide	TH M3 020 05 030
2.0	31.0	5.0	40.0	1.5	1.70	Stainless steel / Carbide	TH M3 020 05 040
2.5	11.0	5.0	20.0	1.5	1.0	Stainless steel / Carbide	TH M3 025 05 020
2.5	21.0	5.0	30.0	1.5	1.5	Stainless steel / Carbide	TH M3 025 05 030
2.5	31.0	5.0	40.0	1.5	2.0	Stainless steel / Carbide	TH M3 025 05 040

**M3
Ruby XXT
Carbon Fiber**

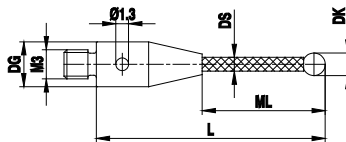


**Ball Range
3.0-8.0 mm**

TN: 404 - O: 7903

DK	ML1 ML	DG D	L	DS1 DS	Weight g	Base/Stem Material	Part Number
3.0	16.00	5.0	25.0	2.0	0.65	Stainless steel / Carbon fiber	TC M3 030 05 025
3.0	24.0	5.0	33.0	2.0	0.70	Stainless steel / Carbon fiber	TC M3 030 05 033
3.0	33.0	5.0	42.0	2.0	0.80	Stainless steel / Carbon fiber	TC M3 030 05 042
3.0	41.0	5.0	50.0	2.0	0.80	Stainless steel / Carbon fiber	TC M3 030 05 050
3.0	50.0	5.0	59.0	2.0	1.0	Stainless steel / Carbon fiber	TC M3 030 05 059
3.0	66.0	5.0	75.0	2.0	1.0	Stainless steel / Carbon fiber	TC M3 030 05 075
4.0	41.0	5.0	50.0	2.0	1.0	Stainless steel / Carbon fiber	TC M3 040 05 050
5.0	21.0	5.0	30.0	3.5	1.1	Stainless steel / Carbon fiber	TC M3 050 05 030/9
5.0	31.0	5.0	40.0	3.5	1.2	Stainless steel / Carbon fiber	TC M3 050 05 040
5.0	41.0	5.0	50.0	3.5	1.4	Stainless steel / Carbon fiber	TC M3 050 05 050
5.0	51.0	5.0	60.0	3.5	1.5	Stainless steel / Carbon fiber	TC M3 050 05 060
5.0	66.0	5.0	75.0	3.5	1.8	Stainless steel / Carbon fiber	TC M3 050 05 075
6.0	40.0	5.0	50.0	3.5	1.5	Stainless steel / Carbon fiber	TC M3 060 05 050
6.0	61.0	5.0	70.0	3.5	1.8	Stainless steel / Carbon fiber	TC M3 060 05 070
6.0	91.0	5.0	100.0	3.5	2.4	Stainless steel / Carbon fiber	TC M3 060 05 100
8.0	30.0	5.0	30.0	5.0	1.86	Stainless steel / Carbon fiber	TC M3 080 05 030
8.0	50.0	5.0	50.0	5.0	2.1	Stainless steel / Carbon fiber	TC M3 080 05 050
8.0	70.0	5.0	70.0	5.0	2.6	Stainless steel / Carbon fiber	TC M3 080 05 070
8.0	100.00	5.0	100.0	5.0	2.7	Stainless steel / Carbon fiber	TC M3 080 05 100
8.0	125.0	5.0	125.0	5.0	2.9	Stainless steel / Carbon fiber	TC M3 080 05 125

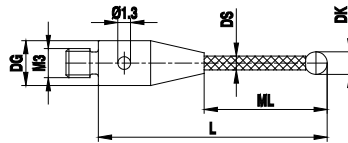
**M3
Ruby XXT
Clamping Styli
Carbon Fiber**



**Ball Range
3.0 mm**

TN: 407 - O: 7904

DK	ML1 ML	DG D	L	DS1 DS	Weight g	Body Material	Part Number
3.0	11.0	5.0	20.0	2.0	0.7	Stainless steel / Carbon fiber	TC M3 030 05 020
3.0	21.0	5.0	30.0	2.0	0.75	Stainless steel / Carbon fiber	TC M3 030 05 030
3.0	31.0	5.0	40.0	2.0	0.8	Stainless steel / Carbon fiber	TC M3 030 05 040

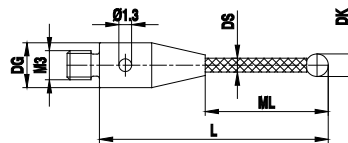


M3
Silicon Nitride
Clamping Stylus
XXT
Carbon Fiber

Ball Range
3.0 mm

TN: 409 – O: 7905

DK	ML1 ML	DG D	L	DS1 DS	Weight g	Body Material	Part Number
3.0	11.0	5.0	20.0	2.0	0.7	Stainless steel / Carbon fiber	TC M3 S30 05 020
3.0	21.0	5.0	30.0	2.0	0.75	Stainless steel / Carbon fiber	TC M3 S30 05 030
3.0	31.0	5.0	40.0	2.0	0.8	Stainless steel / Carbon fiber	TC M3 S30 05 040



M3
Silicon Nitride
XXT
Carbon Fiber

Ball Range
3.0-8.0 mm

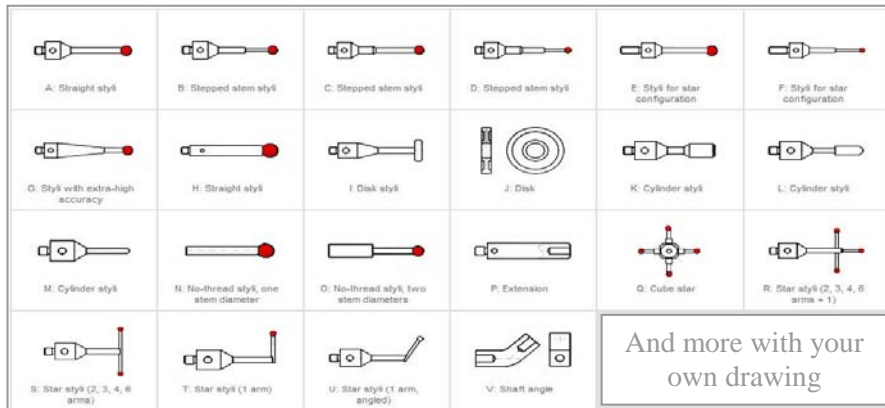
TN: 406 – O: 7906

DK	ML1 ML	DG D	L	DS1 DS	Weight g	Body Material	Part Number
3.0	24.0	5.0	33.0	2.0	0.7	Stainless steel / Carbon fiber	TC M3 S30 05 033
3.0	41.0	5.0	50.0	2.0	0.8	Stainless steel / Carbon fiber	TC M3 S30 05 050
5.0	41.0	5.0	50.0	3.5	1.4	Stainless steel / Carbon fiber	TC M3 S50 05 050
5.0	66.0	5.0	75.0	3.5	1.8	Stainless steel / Carbon fiber	TC M3 S50 05 075
8.0	70.0	5.0	70.0	5.0	2.6	Stainless steel / Carbon fiber	TC M3 S80 05 070
8.0	125.0	5.0	125.0	5.0	2.9	Stainless steel / Carbon fiber	TC M3 S80 05 125

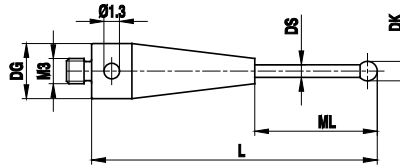
Can't find what you need in the catalog?

--- Build your own ---

Need an extra 2 mm in measuring length? Want to switch out ball diameters or materials? We'll do it. The schematics shown below are the starting point. Visit www.itpstyli.com, select "Design your own," and fill in the interactive spec sheet. We'll provide a quote within a couple of hours and ship the product in as soon as 72 hours.



**M3
Reference Styli
XXT
Stainless Steel**

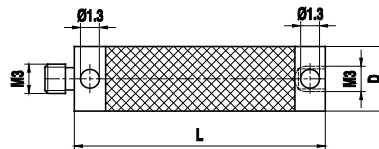


**Master Probe
Red Dot**

TN: 403 – O: 7907

DK	ML1 ML	DG D	L	DS1 DS	Weight g	Base/Stem Material	Part Number
5.0	21.0	5.0	30.0	3.5	1.1	Stainless steel	TC M3 R50 05 030
5.0	41.0	5.0	50.0	3.5	1.4	Stainless steel	TC M3 R50 05 050

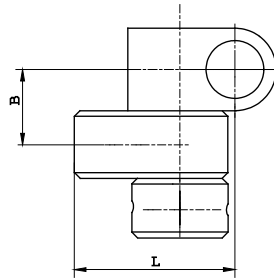
**M3
Extensions XXT
Carbon Fiber**



**Length Range
30.00-150.00 mm**

TN: 410 – O: 7908

L	DG D	Weight g	Body Material	Part Number
20.0	5.0	1.2	Carbon fiber	VC M3 000 05 020
25.0	5.0	1.25	Carbon fiber	VC M3 000 05 025
30.0	5.0	1.3	Carbon fiber	VC M3 000 05 030
40.0	5.0	1.4	Carbon fiber	VC M3 000 05 040
50.0	5.0	1.5	Carbon fiber	VC M3 000 05 050
60.0	5.0	1.7	Carbon fiber	VC M3 000 05 060
75.0	5.0	1.7	Carbon fiber	VC M3 000 05 075
80.0	5.0	1.8	Carbon fiber	VC M3 000 05 080
100.0	5.0	2.0	Carbon fiber	VC M3 000 05 100
130.0	5.0	2.5	Carbon fiber	VC M3 000 05 130
150.0	5.0	2.7	Carbon fiber	VC M3 000 05 150



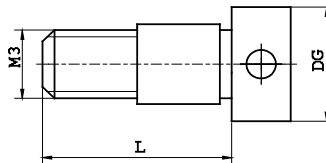
**M3
Knuckle XXT
Titanium**

Knuckle XXT

TN: 420 -- O: 7909

L	EAL B	Weight g	Body Material	Part Number
10.0	5.0	1.65	Titanium	DT M3 000 05 010

**M3
Clamping Screw
XXT
Stainless Steel**

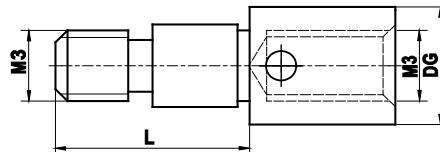


**Clamping Screw
XXT**

TN: 411 -- O: 7910

DG D	L	Weight g	Body Material	Part Number
5.0	8.0	0.5	Stainless steel	SI M3 000 05 008

**M3
Clamping Screw
XXT
Stainless Steel**

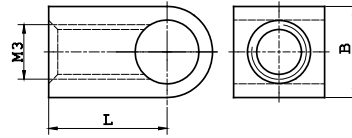


**With Internal
M3 Thread**

TN: 412 -- O: 7911

DG D	L	Weight g	Body Material	Part Number
5.0	8.0	0.7	Stainless steel	SI M3 M30 05 008

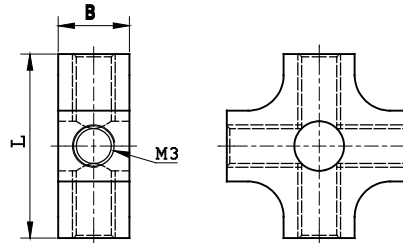
**M3
Cube XXT
Titanium**



90 Degrees, 1-way TN: 417 -- O: 7912

L	EAL B	Weight g	Body Material	Part Number
6.5	5.0	0.64	Titanium	WT M3 000 05 006

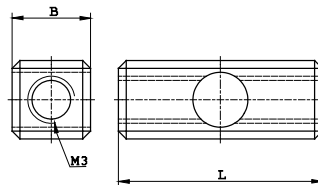
**M3
Cube XXT
Titanium**



180 Degrees, 2-way TN: 418 -- O: 7913

L	EAL B	Weight g	Body Material	Part Number
13.0	5.0	1.05	Titanium	WT M3 180 05 013

**M3
Cube XXT
Titanium**



Star TN: 419 -- O: 7914

L	EAL B	Weight g	Body Material	Part Number
13.0	5.0	1.8	Titanium	WT M3 000 05 013



**M3
Tools**

Assembly Tool

TN: 96 – O: 7918

Body Material	Part Number
Stainless steel	TF M2 M30 08 195



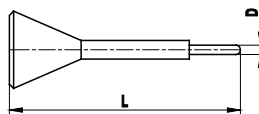
**M3
Tools**

Hexagonal Wrench

TN: 97 – O: 7920

SW	Body Material	Part Number
0.9	Steel	WS DD 911 SW 009
1.5	Steel	WS DD 911 SW 015
2.0	Steel	WS DD 911 SW 020
2.5	Steel	WS DD 911 SW 025
3.0	Steel	WS DD 911 SW 030
4.0	Steel	WS DD 911 SW 040
5.0	Steel	WS DD 911 SW 050
10.0	Steel	WS DD 911 SW 100

**M3
Tools**



Locking Wrench

TN: 95 – O: 7930

DG D	L	Body Material	Part Number
1.2	23.0	Stainless steel	MI MO 012 00 023