



METALSYSTEM

EXCELÊNCIA EM PRODUTOS



itpTM
styli

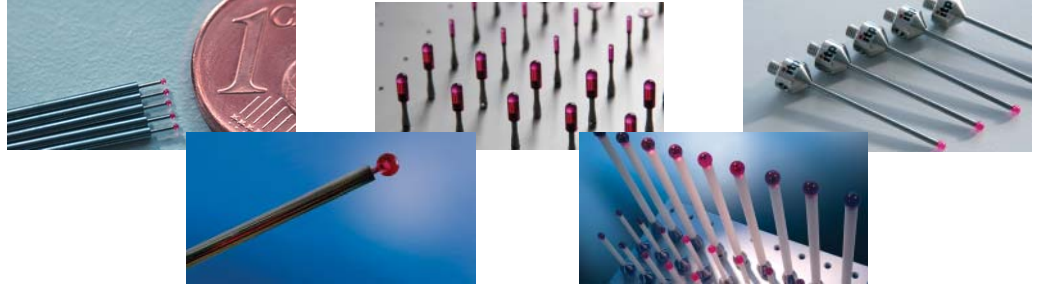
M2



Rua João Pedro Chaves, 140
Jardim América - São Leopoldo - RS - Brasil
CEP: 93032-320

Fone/Fax: +55.51.3037.4868
vendas@metalsystem.ind.br
www.metalsystem.ind.br





Adapter Plates and Adapter Plate Extensions

Adapter plates equivalent to Zeiss Vast and MT with active ID chip and individual plate code. Every plate is tested before shipping. Unbeatable price and ships same day.

Adapter plate extensions with or without cube offer integral components to maximize rigidity.

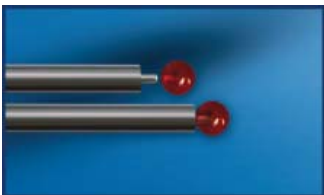


itp Specials: Custom Styli Manufactured to Your Specifications



Whether it is a simple change in length or a more elaborate customization, itpstyli welcomes the opportunity to provide the solution you need.

Best Quality



Peg mounted ruby spheres drilled in-house increase durability and accuracy on spheres up to 10mm in diameter. (Below 0.5mm, drilling is not possible)

Temp-Comp: Constant Length at Varying Temperatures

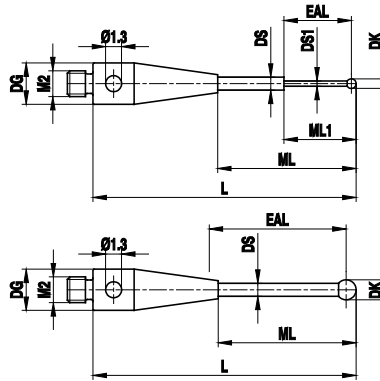
Temp-Comp thermal stable carbon fiber provides relatively low weight and the greatest temperature stability. When coupled with our unique titanium end cap design, thermal expansion is essentially zero on a 180 mm long extension.



Custom Probe Tooling Solutions

Ask us about custom probe tooling solutions from design to delivery. Titanium holders with your unique angles are coupled with Temp-Comp thermal stable carbon fiber in rigid configurations designed to improve cycle time and measurement accuracy.





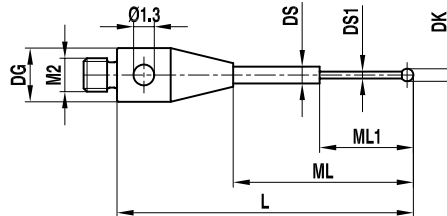
**M2
Mini Ruby
Carbide**

**Ball Range
0.2-0.5 mm**

TN: 112 -- O: 100

DK	L	ML1 ML	DS1 DS	Weight g	Base/Stem Material	Part Number
0.2	10.15	2.3/4.15	0.18/1.0	0.3	Stainless steel / Carbide	TH M2 002 03 010
0.25	10.15	2.3/4.15	0.18/1.0	0.3	Stainless steel / Carbide	TH M2 0025 03 010
0.3	10.15	2.15/4.15	0.2/0.7	0.3	Stainless steel / Carbide	TH M2 003 03 010
0.5	10.25	3.25/4.25	0.4/0.7	0.3	Stainless steel / Carbide	TH M2 005 03 010
0.5	20.25	7.25	0.3	0.3	Stainless steel / Carbide	TH M2 005 03 020

**M2
Mini Ruby
Carbide**

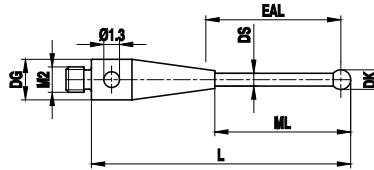


**Ball Range
0.2-0.8 mm**

TN: 78 -- O: 200

DK	L	ML1 ML	DS1 DS	Weight g	Base/Stem Material	Part Number
0.2	17.0	2.3/12.5	0.18/1.0	0.4	Stainless steel / Carbide	TH M2 002 03 017
0.25	17.0	2.3/12.5	0.18/1.0	0.4	Stainless steel / Carbide	TH M2 0025 03 017
0.3	18.0	2.3/13.5	0.2/1.0	0.4	Stainless steel / Carbide	TH M2 003 03 018
0.5	18.0	2.5/13.5	0.3/1.0	0.4	Stainless steel / Carbide	TH M2 005 03 018
0.6	18.3	4.6/13.8	0.4/1.0	0.4	Stainless steel / Carbide	TH M2 006 03 018
0.8	18.3	4.8/13.8	0.6/1.0	0.4	Stainless steel / Carbide	TH M2 008 03 018

**M2
Ruby
Carbide**



**Ball Range
0.7-3.0 mm**

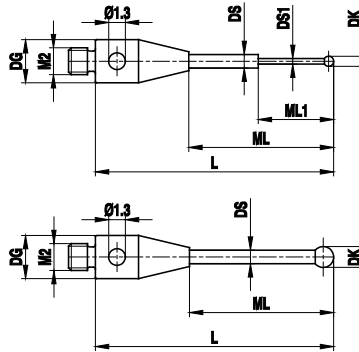
TN: 112 -- O: 300

DK	L	ML1 ML	EAL B	DS1 DS	Weight g	Base/Stem Material	Part Number
0.7	10.35	4.35	4.0	0.5	0.3	Stainless steel / Carbide	TH M2 007 03 010
0.7	20.35	12.35	12.0	0.5	0.3	Stainless steel / Carbide	TH M2 007 03 020
1.0	10.5	4.5	4.0	0.7	0.3	Stainless steel / Carbide	TH M2 010 R3 010
1.0	20.5	7.5	7.0	0.7	0.6	Stainless steel / Carbide	TH M2 010 03 020
1.0	20.5	13.0	12.5	0.8	0.4	Stainless steel / Carbide	TH M2 010 03 021
1.0	27.5	20.5	20.5	0.7	0.4	Stainless steel / Carbide	TH M2 010 03 027
1.5	20.75	13.25	12.5	1.0	0.5	Stainless steel / Carbide	TH M2 015 03 021
1.5	30.75	23.25	22.5	1.0	0.6	Stainless steel / Carbide	TH M2 015 03 031
2.0	31.0	23.5	22.5	1.5	1.0	Stainless steel / Carbide	TH M2 020 03 031
2.0	41.0	33.5	35.0	1.5	1.3	Stainless steel / Carbide	TH M2 020 03 041
2.0	21.0	13.0	12.0	1.0	0.5	Stainless steel / Carbide	TH M2 020 R3 021
2.5	21.25	13.75	15.5	1.0	0.5	Stainless steel / Carbide	TH M2 025 03 021
2.5	31.25	23.75	25.0	2.0	1.5	Stainless steel / Carbide	TH M2 025 03 031
2.5	41.25	33.75	35.0	2.0	2.0	Stainless steel / Carbide	TH M2 025 03 041
3.0	31.5	24.0	25.0	2.0	1.5	Stainless steel / Carbide	TH M2 030 03 032
3.0	41.5	34.0	35.0	2.0	2.0	Stainless steel / Carbide	TH M2 030 03 042
3.0	51.5	44.0	42.5	2.0	2.5	Stainless steel / Carbide	TH M2 030 03 051
3.0	21.5	15.5	20.0	1.5	0.8	Stainless steel / Carbide	TH M2 030 03 021

**General Rule for estimating
maximum Stem Length**



Your selection of styli should always maximize the size of the sphere and stem diameter while minimizing overall length. If your application requires mini styli in the very low DK range, realize that the stem diameter will dictate the effective length. As a **general rule**, the maximum stem length will be 10 times the diameter of the sphere. For example, a 0.5 mm sphere (likely to have a 0.3 mm stem) can be mounted on a stem no longer than 5.0 mm.

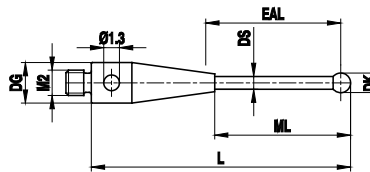


**M2
Ruby
Carbide**

**Ball Range
1.0-4.0 mm**

TN: 78 -- O: 400

DK	L	ML1 ML	DS1 DS	Weight g	Base/Stem Material	Part Number
1.0	10.5	6.5	0.8	0.3	Stainless steel / Carbide	TH M2 010 03 010
1.0	15.5	11.5	0.8	0.3	Stainless steel / Carbide	TH M2 010 03 015
1.0	18.5	5.0/14.0	0.8/1.0	0.4	Stainless steel / Carbide	TH M2 010 03 018
2.0	11.0	7.0	1.0	1.0	Stainless steel / Carbide	TH M2 020 03 011
2.0	11.0	5.0	1.0	1.0	Stainless steel / Carbide	TH M2 020 63 011
2.0	16.0	12.0	1.0	1.0	Stainless steel / Carbide	TH M2 020 03 016
2.0	21.0	15.0	1.0	1.0	Stainless steel / Carbide	TH M2 020 03 021
2.5	12.0	6.0	1.5	1.0	Stainless steel / Carbide	TH M2 025 03 012
3.0	12.0	6.0	2.0	1.0	Stainless steel / Carbide	TH M2 030 03 012
3.0	21.5	15.5	1.5	1.0	Stainless steel / Carbide	TH M2 030 03 021
4.0	12.0	8.0	2.5	1.0	Stainless steel / Carbide	TH M2 040 03 012
4.0	22.0	18.0	2.5	1.0	Stainless steel / Carbide	TH M2 040 03 022



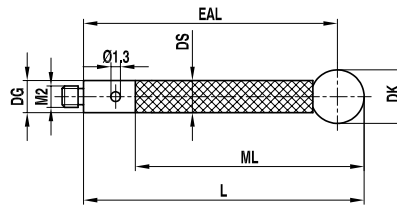
**M2
Ruby
Carbide**

**Ball Range
4.0-5.0 mm**

TN: 112 -- O: 500

DK	L	ML1 ML	EAL B	DS1 DS	Weight g	Base/Stem Material	Part Number
4.0	32.0	24.5	30.0	2.0	1.6	Stainless steel / Carbide	TH M2 040 03 032
4.0	42.0	34.5	40.0	2.0	2.1	Stainless steel / Carbide	TH M2 040 03 042
4.0	52.0	44.5	50.0	2.0	2.5	Stainless steel / Carbide	TH M2 040 03 052
4.0	24.0	17.0	22.0	2.0	1.2	Stainless steel / Carbide	TH M2 040 03 024
5.0	22.5	16.5	20.0	2.0	2.0	Stainless steel / Carbide	TH M2 050 03 022
5.0	32.5	25.0	30.0	2.5	2.6	Stainless steel / Carbide	TH M2 050 03 032
5.0	42.5	35.0	40.0	2.5	3.2	Stainless steel / Carbide	TH M2 050 03 042
5.0	52.5	45.0	50.0	2.5	3.8	Stainless steel / Carbide	TH M2 050 03 052

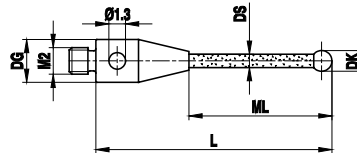
**M2
Ruby
Carbon Fiber**



**Ball Range
3.0-6.0 mm** TN: 116 -- O: 600

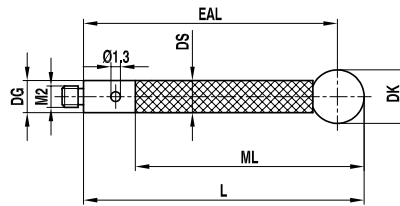
DK	L	EAL B	DS1 DS	Weight g	Base/Stem Material	Part Number
3.0	31.5	27.0	2.0	0.4	Stainless steel / Carbon fiber	TC M2 030 03 031
3.0	41.5	36.0	2.0	0.5	Stainless steel / Carbon fiber	TC M2 030 03 041
4.0	52.0	50.0	3.0	1.0	Stainless steel / Carbon fiber	TC M2 040 03 052
4.0	32.0	30.0	2.0	0.6	Stainless steel / Carbon fiber	TC M2 040 03 032
4.0	77.0	75.0	3.0	0.8	Stainless steel / Carbon fiber	TC M2 040 03 077
4.0	102.0	100.0	3.0	1.5	Stainless steel / Carbon fiber	TC M2 040 03 102
5.0	32.5	30.0	3.0	0.8	Stainless steel / Carbon fiber	TC M2 050 03 032
5.0	77.5	75.0	3.0	1.3	Stainless steel / Carbon fiber	TC M2 050 03 077
5.0	102.5	100.0	3.0	1.6	Stainless steel / Carbon fiber	TC M2 050 03 102
5.0	52.5	50.0	3.0	1.1	Stainless steel / Carbon fiber	TC M2 050 03 052
6.0	53.0	50.0	3.0	1.2	Stainless steel / Carbon fiber	TC M2 060 03 053
6.0	33.0	30.0	3.0	1.0	Stainless steel / Carbon fiber	TC M2 060 03 033
6.0	78.0	75.0	3.0	1.5	Stainless steel / Carbon fiber	TC M2 060 03 078
6.0	103.0	100.0	3.0	1.8	Stainless steel / Carbon fiber	TC M2 060 03 103

**M2
Ruby
Ceramic**



**Ball Range
4.0-6.0 mm** TN: 79 -- O: 700

DK	L	ML1 ML	DS1 DS	Weight g	Base/Stem Material	Part Number
4.0	16.0	12.0	2.0	0.8	Stainless steel / Ceramic	TK M2 040 03 016
4.0	36.0	30.0	2.0	1.0	Stainless steel / Ceramic	TK M2 040 03 036
5.0	14.0	10.0	2.0	0.8	Stainless steel / Ceramic	TK M2 050 03 014
5.0	38.0	32.0	2.0	1.0	Stainless steel / Ceramic	TK M2 050 03 038
5.0	22.5	16.5	2.0	1.0	Stainless steel / Ceramic	TK M2 050 03 022
6.0	13.0	9.0	2.0	1.0	Stainless steel / Ceramic	TK M2 060 03 013

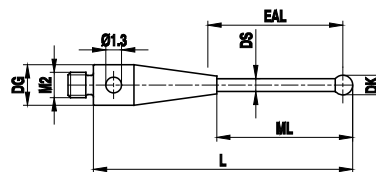


**M2
Ruby
Ceramic**

**Ball Range
3.0-6.0 mm**

TN: 115 -- O: 800

DK	L	ML1 ML	EAL B	DS1 DS	Weight g	Base/Stem Material	Part Number
3.0	31.5	24.0	27.5	2.0	0.4	Stainless steel / Ceramic	TK M2 030 03 031
3.0	51.5	44.0	42.5	2.0	0.8	Stainless steel / Ceramic	TK M2 030 03 051
4.0	52.0	44.5	50.0	2.0	0.9	Stainless steel / Ceramic	TK M2 040 03 052
4.0	32.0	24.5	30.0	2.0	0.7	Stainless steel / Ceramic	TK M2 040 03 032
5.0	32.5	25.0	30.0	2.5	0.9	Stainless steel / Ceramic	TK M2 050 03 032
5.0	52.5	45.0	50.0	2.5	1.0	Stainless steel / Ceramic	TK M2 050 03 053
6.0	33.0	25.5	30.0	2.5	1.1	Stainless steel / Ceramic	TK M2 060 03 033
6.0	53.0	45.5	50.0	2.5	1.5	Stainless steel / Ceramic	TK M2 060 03 053



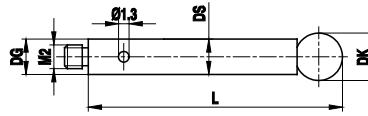
**M2
Ruby
Stainless Steel**

**Ball Range
1.0-8.0 mm**

TN: 114 -- O: 900

DK	L	ML1 ML	EAL B	DS1 DS	Weight g	Base/Stem Material	Part Number
1.0	10.5	5.0	4.5	0.7	0.3	Stainless steel	TI M2 010 03 010
1.5	10.75	5.0	4.5	0.7	0.3	Stainless steel	TI M2 015 03 011
2.0	11.0	6.0	6.0	1.0	0.3	Stainless steel	TI M2 020 03 011
2.0	21.0	14.5	14.0	1.4	0.4	Stainless steel	TI M2 020 03 021
2.5	11.25	6.5	6.0	1.0	0.3	Stainless steel	TI M2 025 03 011
2.5	21.25	15.0	14.0	1.4	0.4	Stainless steel	TI M2 025 03 021
3.0	11.5	6.0	7.5	1.5	0.4	Stainless steel	TI M2 030 03 011
3.0	21.5	15.0	17.5	1.5	0.5	Stainless steel	TI M2 030 03 021
4.0	12.0	7.0	10.0	1.5	0.4	Stainless steel	TI M2 040 03 012
4.0	22.0	15.0	20.0	1.5	0.6	Stainless steel	TI M2 040 03 022
5.0	12.5	8.5	10.0	2.5	0.7	Stainless steel	TI M2 050 03 012
6.0	13.0	9.0	10.0	2.5	0.9	Stainless steel	TI M2 060 R3 013
8.0	15.0	11.0	11.0	2.5	1.5	Stainless steel	TI M2 080 03 015

**M2
Ruby
Stainless Steel**

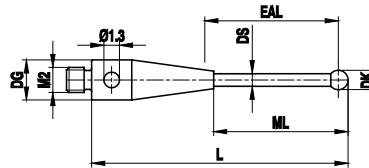


**Ball Range
4.0-8.0 mm**

TN: 80 -- O: 1000

DK	L	ML1 ML	DS1 DS	Weight g	Base/Stem Material	Part Number
4.0	32.0	32.0	3.0	1.7	Stainless steel	TI M2 040 03 032
4.0	42.0	42.0	3.0	2.4	Stainless steel	TI M2 040 03 042
4.0	52.0	52.0	3.0	2.9	Stainless steel	TI M2 040 03 052
5.0	22.0	22.0	3.0	1.3	Stainless steel	TI M2 050 03 022
5.0	32.0	32.0	3.0	1.9	Stainless steel	TI M2 050 03 032
5.0	42.5	42.5	3.0	2.5	Stainless steel	TI M2 050 03 042
5.0	52.5	52.5	3.0	3.1	Stainless steel	TI M2 050 03 052
6.0	13.0	13.0	3.0	0.9	Stainless steel	TI M2 060 03 013
6.0	28.0	28.0	3.0	1.8	Stainless steel	TI M2 060 03 028
8.0	13.0	13.0	3.0	2.0	Stainless steel	TI M2 080 03 013

**M2
Silicon Nitride
Carbide**

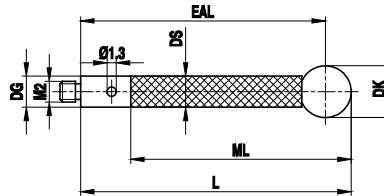


**Ball Range
1.0-5.0 mm**

TN: 198 -- O: 1100

DK	L	ML1 ML	EAL B	DS1 DS	Weight g	Base/Stem Material	Part Number
1.0	20.5	7.5	7.0	0.7	0.6	Stainless steel / Carbide	TH M2 S10 03 020
1.0	20.5	13.0	12.5	0.8	0.4	Stainless steel / Carbide	TH M2 S10 03 021
1.0	27.5	20.5	20.5	0.7	0.4	Stainless steel / Carbide	TH M2 S10 03 027
1.5	20.75	13.25	15.0	1.0	0.5	Stainless steel / Carbide	TH M2 S15 03 021
1.5	30.75	23.25	25.0	1.0	0.6	Stainless steel / Carbide	TH M2 S15 03 031
2.0	31.0	23.5	25.0	1.5	1.0	Stainless steel / Carbide	TH M2 S20 03 031
2.0	41.0	33.5	35.0	1.5	1.3	Stainless steel / Carbide	TH M2 S20 03 041
2.5	31.25	23.75	25.0	2.0	1.5	Stainless steel / Carbide	TH M2 S25 03 031
2.5	41.25	33.75	35.0	2.0	2.0	Stainless steel / Carbide	TH M2 S25 03 041
3.0	31.5	24.0	25.0	2.0	1.5	Stainless steel / Carbide	TH M2 S30 03 032
3.0	41.5	34.0	35.0	2.0	2.0	Stainless steel / Carbide	TH M2 S30 03 042
3.0	51.5	44.0	42.5	2.0	2.5	Stainless steel / Carbide	TH M2 S30 03 051
4.0	32.0	24.5	30.0	2.0	1.6	Stainless steel / Carbide	TH M2 S40 03 032
4.0	42.0	34.5	40.0	2.0	2.1	Stainless steel / Carbide	TH M2 S40 03 042
4.0	52.0	44.5	50.0	2.0	2.5	Stainless steel / Carbide	TH M2 S40 03 052
5.0	22.5	16.5	20.0	2.0	2.0	Stainless steel / Carbide	TH M2 S50 03 022
5.0	32.5	25.0	30.0	2.5	2.6	Stainless steel / Carbide	TH M2 S50 03 032
5.0	42.5	35.0	40.0	2.5	3.2	Stainless steel / Carbide	TH M2 S50 03 042
5.0	52.5	45.0	50.0	2.5	3.8	Stainless steel / Carbide	TH M2 S50 03 052

**M2
Silicon Nitride
Carbon Fiber**

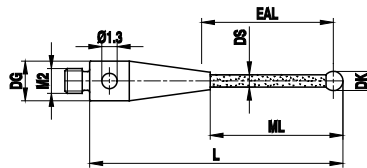


**Ball Range
4.0-6.0 mm**

TN: 201 -- O: 1200

DK	L	ML1 ML	EAL B	DS1 DS	Weight g	Base/Stem Material	Part Number
4.0	52.0	44.0	50.0	3.0	1.0	Stainless steel / Carbon fiber	TC M2 S40 03 052
5.0	52.5	44.5	50.0	3.0	1.1	Stainless steel / Carbon fiber	TC M2 S50 03 052
6.0	53.0	45.0	50.0	3.0	1.2	Stainless steel / Carbon fiber	TC M2 S60 03 053

**M2
Silicon Nitride
Ceramic**



**Ball Range
3.0-5.0 mm**

TN: 199 -- O: 1300

DK	L	ML1 ML	EAL B	DS1 DS	Weight g	Base/Stem Material	Part Number
3.0	51.5	44.0	42.5	2.0	0.8	Stainless steel / Ceramic	TK M2 S30 03 051
4.0	52.0	44.5	50.0	2.0	0.9	Stainless steel / Ceramic	TK M2 S40 03 052
5.0	52.5	45.0	50.0	2.5	1.0	Stainless steel / Ceramic	TK M2 S50 03 053



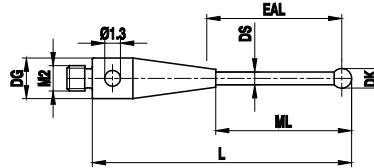
Holders – Knuckles – Adapters

With options available for every thread size, unique configurations can be developed to provide contact point access where you need it.

Materials include titanium and stainless steel. The quality and precision of these machined parts is unsurpassed.

Refer to the table of contents to find the location of the thread size and accessory you need.

**M2
Silicon Nitride
Stainless Steel**

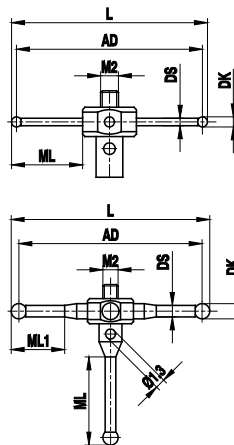


**Ball Range
1.0-8.0 mm**

TN: 200 -- O: 1400

DK	L	ML1 ML	EAL	DS1 DS	Weight g	Base/Stem Material	Part Number
1.0	10.5	5.0	4.5	0.7	0.3	Stainless steel	TI M2 S10 03 010
1.5	10.75	5.0	4.5	0.7	0.3	Stainless steel	TI M2 S15 03 011
2.0	11.0	6.0	6.0	1.0	0.3	Stainless steel	TI M2 S20 03 011
2.0	21.0	14.5	14.0	1.4	0.4	Stainless steel	TI M2 S20 03 021
2.5	11.25	6.5	6.0	1.0	0.3	Stainless steel	TI M2 S25 03 011
2.5	21.25	15.0	14.0	1.4	0.4	Stainless steel	TI M2 S25 03 021
3.0	11.5	6.0	7.5	1.5	0.4	Stainless steel	TI M2 S30 03 011
3.0	21.5	15.0	17.5	1.5	0.5	Stainless steel	TI M2 S30 03 021
4.0	12.0	7.0	10.0	1.5	0.4	Stainless steel	TI M2 S40 03 012
4.0	22.0	15.0	20.0	1.5	0.6	Stainless steel	TI M2 S40 03 022
5.0	12.5	8.5	10.0	2.5	0.7	Stainless steel	TI M2 S50 03 012
6.0	13.0	9.0	10.0	2.5	0.9	Stainless steel	TI M2 S60 R3 013
8.0	15.0	11.0	11.0	2.5	1.5	Stainless steel	TI M2 S80 03 015

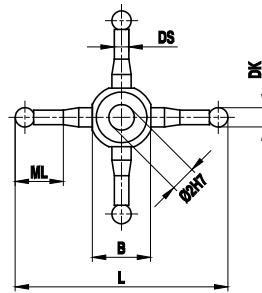
**M2
Ruby
Star Styli
Stainless Steel**



**Ball Range
0.5-2.0 mm**

TN: 117 -- O: 1500

DK	L	AD	ML1 ML	DS1 DS	Weight g	Base/Stem Material	Part Number
0.5	10.5	10.0	2.75	0.3	0.7	Stainless steel	SI M2 005 05 010 *
0.5	20.5	20.0	7.75	0.3	0.7	Stainless steel	SI M2 005 05 020 *
1.0	21.0	20.0	8.0	0.7	0.9	Stainless steel	SI M2 010 05 021 *
1.0	11.0	10.0	3.0	0.7	0.8	Stainless steel	SI M2 010 05 011 *
2.0	22.0	20.0	4.5 / 13.5	1.4	1.3	Stainless steel	SI M2 020 05 022 **
2.0	32.0	30.0	9.5 / 13.5	1.4	1.8	Stainless steel	SI M2 020 05 032 **

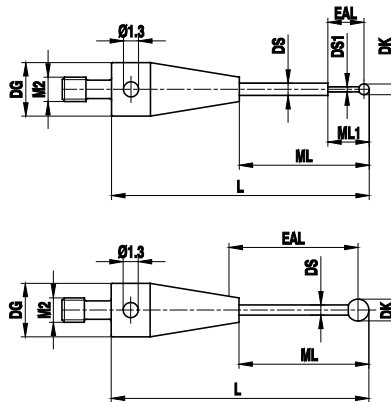


**M2
Ruby
Star Styli
Stainless Steel**

**Ball Range
2.0 mm** TN: 82 -- O: 1600

DK	L	ML1 ML	DS1 DS	Weight g	Base/Stem Material	Part Number
2.0	22.0	4.5	1.4	1.0	Stainless steel	SI M2 020 06 022
2.0	32.0	9.5	1.4	1.0	Stainless steel	SI M2 020 06 032

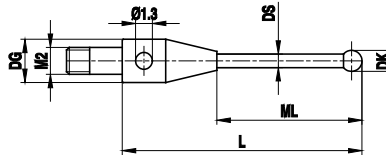
**M2
Ruby
Star Styli
Carbide**



**Ball Range
0.5-2.0 mm** TN: 296 -- O: 1700

DK	L	ML1 ML	DS1 DS	Weight g	Base/Stem Material	Part Number
0.5	19.0	7.0 / 11.5	0.4 / 0.7	0.4	Stainless steel / Carbide	TH M2 005 03 019
1.0	9.5	4.5	0.7	0.3	Stainless steel / Carbide	TH M2 010 03 009
1.0	19.0	11.5	0.7	0.5	Stainless steel / Carbide	TH M2 010 03 019
2.0	17.5	12.0	1.4	0.4	Stainless steel / Carbide	TH M2 020 03 017

**M2
Ruby
Star Styli
Stainless Steel**

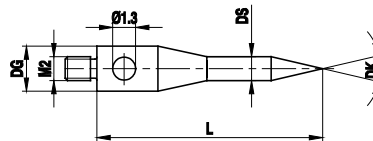


Ball Range
2.0 mm

TN: 83 -- O: 1800

DK	L	ML1 ML	DS1 DS	Weight g	Base/Stem Material	Part Number
2.0	19.5	13.5	1.5	1.0	Stainless steel	SI M2 020 03 019

**M2
Pointer Styli
Carbide**

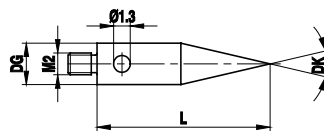


Angle Range
30°-60°

TN: 90 -- O: 1900

DK	L	DG D	DS1 DS	Weight g	Base/Tip Material	Part Number
30°	10.0	3.0	1.5	1.0	Stainless steel / Carbide	IH M2 030 03 010
60°	10.0	3.0	1.5	1.0	Stainless steel / Carbide	IH M2 060 03 010

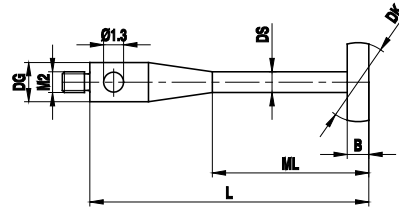
**M2
Pointer Styli
Carbide**



Angle Range
30°

TN: 124 -- O: 2000

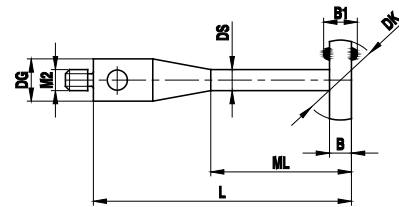
DK	L	DG D	DS1 DS	Weight g	Base/Tip Material	Part Number
30°	15.0	3.0	3.0	0.7	Stainless steel / Carbide	II M2 030 03 015



**M2
Disks
Ceramic**

**Disk Range
4.0-8.0 mm** TN: 84 -- O: 2100

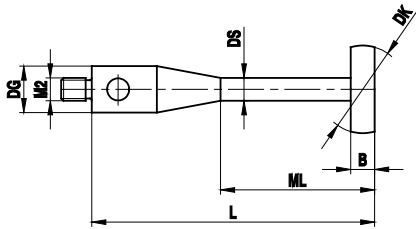
DK	L	ML1 ML	DS1 DS	EAL B	Weight g	Base/Stem Material	Disk Material	Part Number
4.0	32.0	19.0	1.0	1.0	1.0	Stainless steel / Carbide	Ceramic	KK M2 040 03 032
8.0	32.0	19.0	1.5	1.5	1.0	Stainless steel / Carbide	Ceramic	KK M2 080 03 032



**M2
Disks
Ruby**

**Disk Range
6.0 mm** TN: 191 -- O: 2200

DK	DS1 DS	DG D	ML1 ML	B1 B	Weight g	Base/Stem Material	Disk Material	Part Number
6.0	2.0	3.0		2.0/1.2	0.6	Stainless steel	Ruby	KR M2 060 03 010
6.0	2.0	3.0	6.0	2.0/1.5	1.0	Stainless steel	Ruby	KI M2 060 03 010

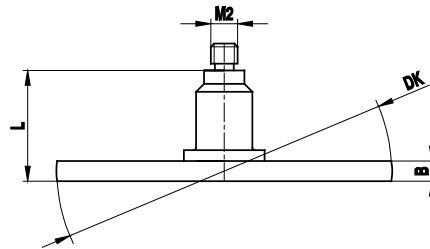


**M2
Disks
Stainless Steel**

**Disk Range
5.0-12.0 mm** TN: 350 -- O: 2300

DK	L	ML1 ML	DS1 DS	EAL B	Weight g	Stem/Disk Material	Part Number
5.0	15.0	11.0	1.5	0.5	0.8	Stainless steel	KI M2 050 03 015
6.0	10.0	6.0	2.0	0.8	0.8	Stainless steel	KI M2 060 03 010/0.8
8.0	20.0	16.0	2.0	0.5	1.1	Stainless steel	KI M2 080 03 020
10.0	20.0	16.0	2.0	0.5	1.2	Stainless steel	KI M2 100 03 020
10.0	20.0	16.0	2.0	0.8	1.2	Stainless steel	KI M2 100 03 020/0.8
12.0	20.0	16.0	2.0	0.8	1.3	Stainless steel	KI M2 120 03 020

**M2
Disks
Stainless Steel**

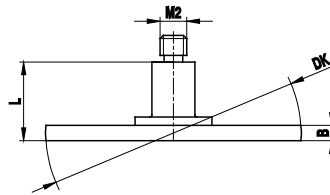


**Disk Range
18.0-25.0 mm**

TN: 316 -- O: 2400

DK	L	EAL B	Weight g	Disk Material	Part Number
18.0	2.0	0.5	2.5	Stainless steel	KI M2 005 18 002
18.0	2.0	0.8	2.6	Stainless steel	KI M2 008 18 002
25.0	4.0	3.0	11.4	Stainless steel	KI M2 030 25 M20

**M2
Disks
Stainless Steel**

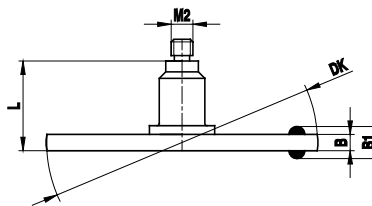


**Disk Range
14.0-20.0 mm**

TN: 85 -- O: 2500

DK	L	EAL B	Weight g	Disk Material	Part Number
14.0	5.5	2.0	1.0	Stainless steel	KI M2 140 20 005
20.0	5.5	2.5	3.0	Stainless steel	KI M2 200 25 005

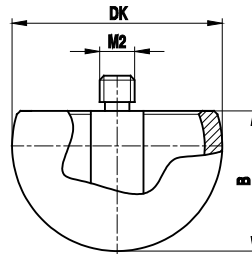
**M2
Disks
Stainless Steel**



**Disk Range
18.0-25.0 mm**

TN: 190 -- O: 2600

DK	L	B B1	Weight g	Disk/Ball Material	Part Number
18.0	3.7	2.2 / 3.0	2.7	Stainless steel/Ruby	KI M2 022 18 M20
18.0	8.25	1.5/2.0	3.5	Stainless steel/Ruby	KI M2 015 18 008
18.0	4.0	3.0/4.0	3.8	Stainless steel/Ruby	KI M2 030 18 004
18.0	8.25	1.5 / 2.5	3.0	Stainless steel/Ruby	KI M2 015 18 M20
25.0	8.25	1.5 / 2.5	4.0	Stainless steel/Ruby	KI M2 015 25 M20
25.0	8.25	1.5/2.0	4.0	Stainless steel/Ruby	KI M2 015 25 008
25.0	4.0	3.0/4.0	4.5	Stainless steel/Ruby	KI M2 030 25 004

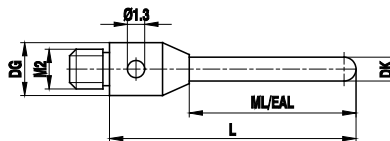


M2
Spherical Styli
Ceramic

Hollow Sphere
18.0-30.0 mm

TN: 192 -- O: 2700

DK	EAL B	Weight g	Stem/Body Material	Part Number
18.0	12.0	3.3	Stainless steel / Ceramic	HK M2 180 03 012
30.0	18.0	18.0	Stainless steel / Ceramic	HK M2 300 03 018

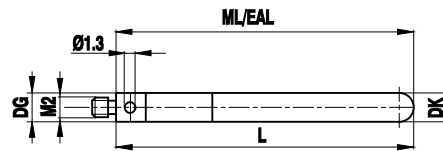


M2
Cylinder
Carbide

Cylinder
1.5-2.0 mm

TN: 188 -- O: 2800

DK	L	ML1 ML	EAL B	Weight g	Base/Cylinder Material	Part Number
1.5	15.8	8.3	8.3	0.7	Stainless steel / Carbide	ZH M2 015 03 016
2.0	16.0	8.5	8.5	0.8	Stainless steel / Carbide	ZH M2 020 03 016
2.0	40.0	32.0	32.0	2.0	Stainless steel / Carbide	ZH M2 020 03 040
2.0	40.0	7.0	7.0	1.9	Stainless steel / Carbide	ZH M2 020 03 A40



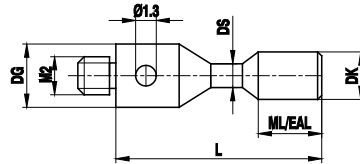
M2
Cylinder
Carbide

Cylinder
3.0 mm

TN: 188 -- O: 2900

DK	L	ML1 ML	EAL B	Weight g	Base/Cylinder Material	Part Number
3.0	22.5	22.5	22.5	2.0	Stainless steel / Carbide	ZH M2 030 03 022

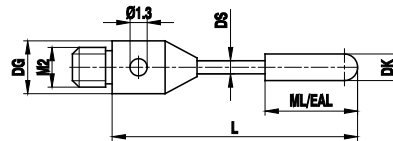
**M2
Cylinder
Carbide**



Cylinder 1.5-3.0 mm TN: 119 -- O: 3010

DK	ML1 ML	EAL B	DG D	L	DS1 DS	Base/Cylinder Material	Part Number
1.5	1.5	1.5	3.0	11.0	1.0	Stainless steel / Carbide	ZH M2 015 03 011
3.0	4.0	4.0	3.0	13.0	1.5	Stainless steel / Carbide	ZH M2 030 03 013

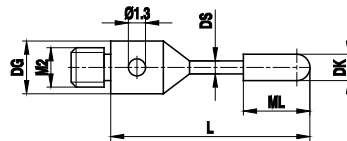
**M2
Cylinder
Ruby**



Cylinder 4.0 mm TN: 189 -- O: 3100

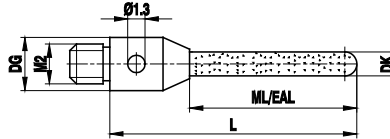
DK	L	ML1 ML	EAL B	DS1 DS	Weight g	Base/Cylinder Material	Part Number
2.0	20.0	7.0	7.0	1.5	0.5	Stainless steel/Ruby	ZR M2 020 03 020
4.0	22.0	10.5	10.5	2.0	0.9	Stainless steel/Ruby	ZR M2 040 03 022

**M2
Cylinder
Ruby**



Cylinder 2.0 mm TN: 310 -- O: 3200

DK	L	ML1 ML	DS1 DS	Weight g	Base/Cylinder Material	Part Number
2.0	20.0	7.0	1.5	0.6	Stainless steel/Ruby	ZR M2 020 03 020

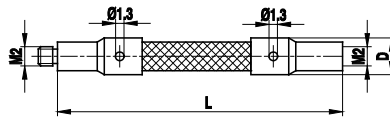


**M2
Cylinder
Zirconium Oxide**

**Cylinder
1.0-1.5 mm**

TN: 315 -- O: 3300

DK	L	ML1 ML	EAL B	Weight g	Base/Cylinder Material	Part Number
1.0	15.0	8.0	8.0	0.3	Stainless steel/Zirconium	ZR M2 010 03 015
1.5	15.0	8.0	8.0	0.3	Stainless steel/Zirconium	ZR M2 015 03 015

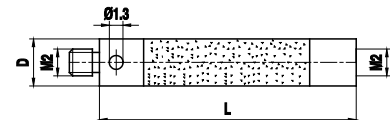


**M2
Extensions
Carbon Fiber**

**Length Range
40.00-90.00 mm**

TN: 123 -- O: 3400

L	DG D	Weight g	Body Material	End Material	Part Number
40.0	3.5	0.9	Carbon fiber	Stainless Steel	VC M2 000 03 040
50.0	3.5	1.0	Carbon fiber	Stainless Steel	VC M2 000 03 050
70.0	3.5	1.3	Carbon fiber	Stainless Steel	VC M2 000 03 070
90.0	3.5	1.5	Carbon fiber	Stainless Steel	VC M2 000 03 090



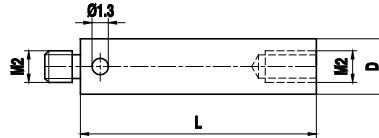
**M2
Extensions
Ceramic**

**Length Range
30.00-60.00 mm**

TN: 122 -- O: 3500

L	DG D	Weight g	Body Material	End Material	Part Number
30.0	3.0	1.0	Ceramic	Stainless Steel	VK M2 000 03 030
40.0	3.0	1.3	Ceramic	Stainless Steel	VK M2 000 03 040
50.0	3.0	1.5	Ceramic	Stainless Steel	VK M2 000 03 050
60.0	3.0	1.7	Ceramic	Stainless Steel	VK M2 000 03 060

M2 Extensions Stainless Steel

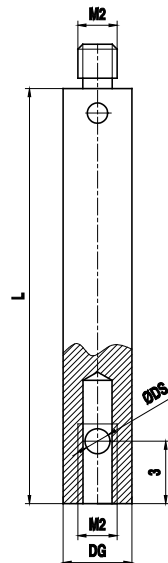


Length Range
5.00-50.00 mm

TN: 81 -- O: 3600

L	DG D	Weight g	Body Material	Part Number
5.0	3.0	0.2	Stainless steel	VI M2 000 03 005
10.0	3.0	0.5	Stainless steel	VI M2 000 03 010
20.0	3.0	1.0	Stainless steel	VI M2 000 03 020
30.0	3.0	1.4	Stainless steel	VI M2 000 03 030
35.0	3.0	1.8	Stainless steel	VI M2 000 03 035
40.0	3.0	2.2	Stainless steel	VI M2 000 03 040
50.0	3.0	2.7	Stainless steel	VI M2 000 03 050

M2 Holders Stainless Steel

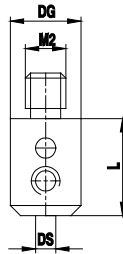


1-Way Holder

TN: 348 -- O: 3700

DS1 DS	DG D	L	Weight g	Body Material	Part Number
1.0	3.0	30.0	2.9	Stainless steel	KH M2 010 03 030
1.5	3.0	30.0	2.9	Stainless steel	KH M2 015 03 030

**M2
Holders
Stainless steel**

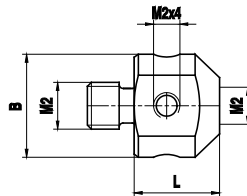


Holder

TN: 338 -- O: 3810

DG D	L	DS1 DS	Weight g	Body Material	Part Number
6.0	8.0	1.0	1.0	Stainless steel	KH M2 010 06 008
6.0	8.0	1.5	1.0	Stainless steel	KH M2 015 06 008
6.0	8.0	2.0	1.0	Stainless steel	KH M2 020 06 008

**M2
Holders
Stainless Steel**

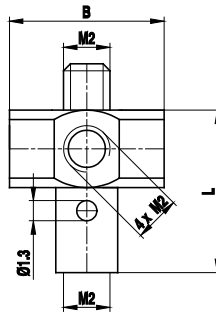


5-Way Holder

TN: 93 -- O: 3900

EAL B	L	Weight g	Body Material	Part Number
7.0	5.4	1.0	Stainless steel	HI M2 000 07 005
10.5	9.1	3.4	Stainless steel	HI M2 000 10 009

**M2
Holders
Stainless Steel**

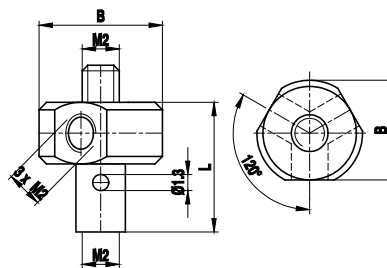


**5-Way Rotary
Holder
7.00 mm**

TN: 89 -- O: 4000

EAL B	L	Weight g	Body Material	Part Number
7.0	7.5	1.2	Stainless steel	HI M2 000 07 008

**M2
Holders
Stainless Steel**

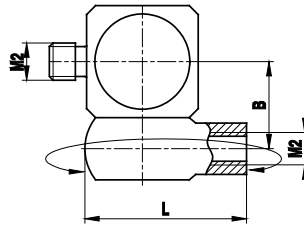


**4-Way Rotary
Holder
7.50 mm**

TN: 128 -- O: 4100

EAL B	L	Weight g	Body Material	Part Number
7.5	7.5	1.2	Stainless steel	HI M2 000 07 007

**M2
Rotary Adapters
Stainless Steel**

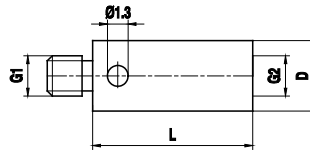


Rotary Adapter

TN: 87 -- O: 4200

EAL B	L	Weight g	Body Material	Part Number
4.5	8.0	2.0	Stainless steel	DI M2 000 04 008

**M2
Adapters
Stainless Steel**

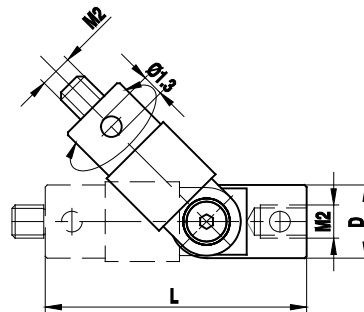


M2 - M3 Adapter

TN: 140 -- O: 4300

G1 G2	DG D	L	Weight g	Material	Part Number
M2/M3	4.0	7.0	0.5	Stainless steel	RI M2 000 04 007
M3/M2	4.0	5.0	0.5	Stainless steel	RI M3 000 04 005
M2/M3	4.0	5.0	0.5	Stainless steel	RI M2 000 04 005

**M2
Rotary Knuckle
Stainless Steel**



Rotary Knuckle

TN: 86 -- O: 4400

DG D	L	Weight g	Body Material	Part Number
4.0	16.5	1.5	Stainless steel	GI M2 000 04 016